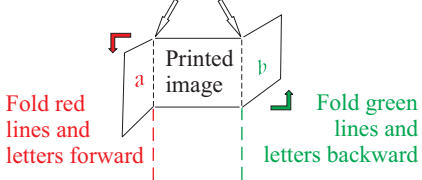


Basic Directions:

Lightly score then fold
black dotted lines

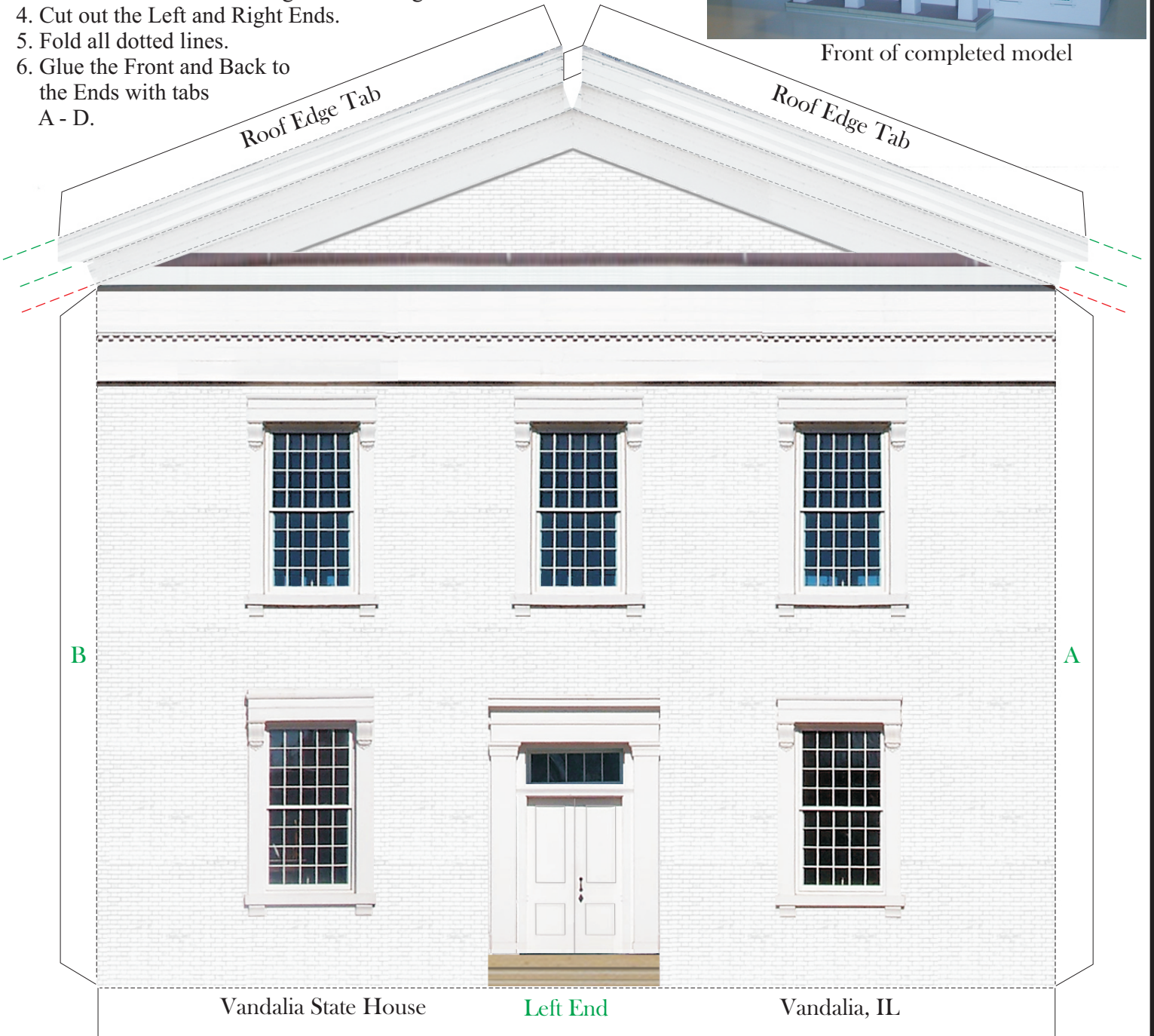


To Assemble Walls:

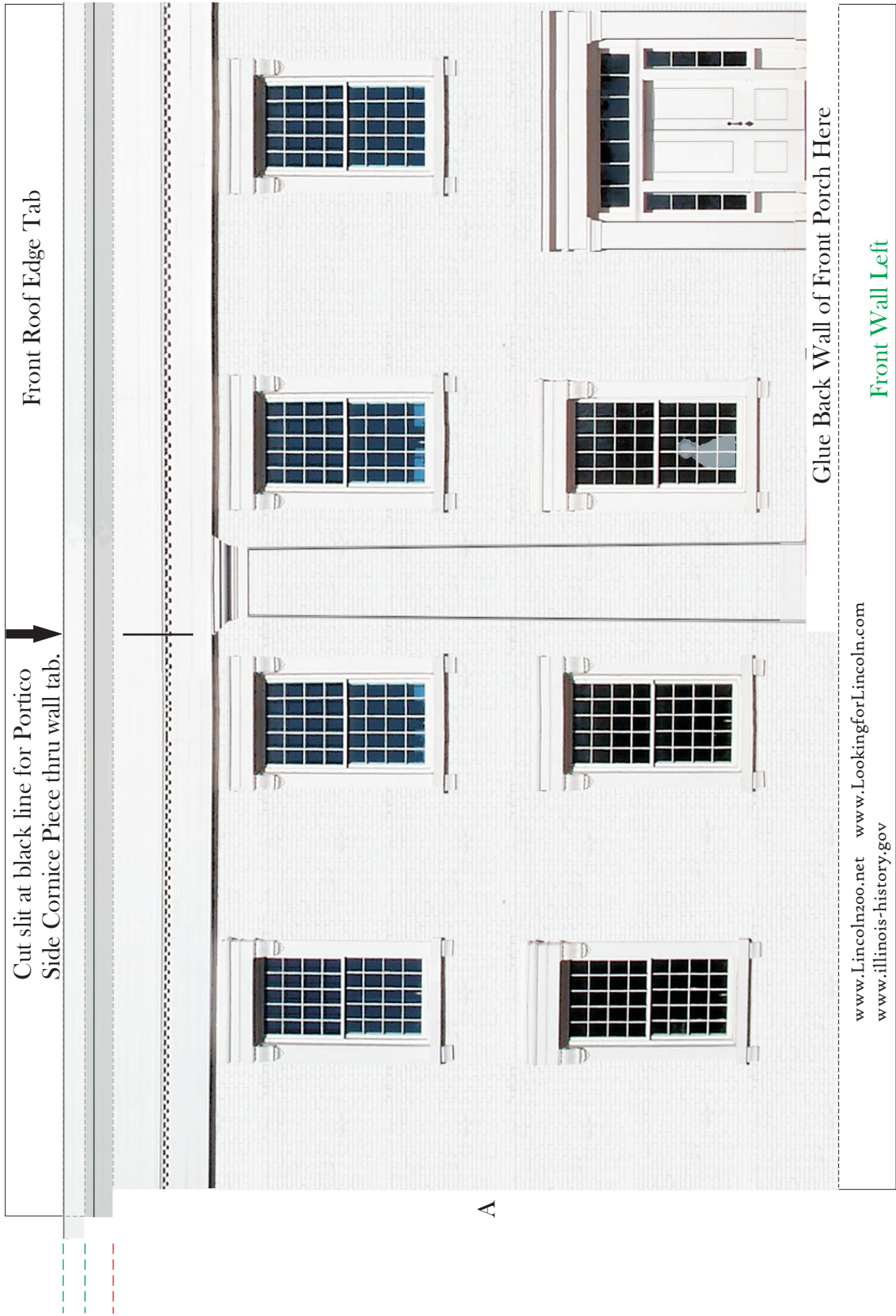
1. Cut out the four Front and Back Wall pieces. Fold all dotted lines.
2. Glue Front Left and Right Sides using tab E.
3. Glue the Back Left and Right Sides using tab F.
4. Cut out the Left and Right Ends.
5. Fold all dotted lines.
6. Glue the Front and Back to the Ends with tabs A - D.



Front of completed model



BUILD YOUR OWN LINCOLN SITES



Front Roof Edge Tab

Cut slit at black line for Portico Side Cornice Piece thru wall tab.

Glue Back Wall of Front Porch Here

Front Wall Left

www.Lincoln200.net www.LookingforLincoln.com
www.illinois-history.gov

BUILD YOUR OWN LINCOLN SITES

X

X

Back Wall of Front Porch

X

X

CB

CB

CB

CB

X

X

X

X

Cut slit at black line for Portico
Side Cornice Piece thru wall tab. ↓

Front Roof Edge Tab



E

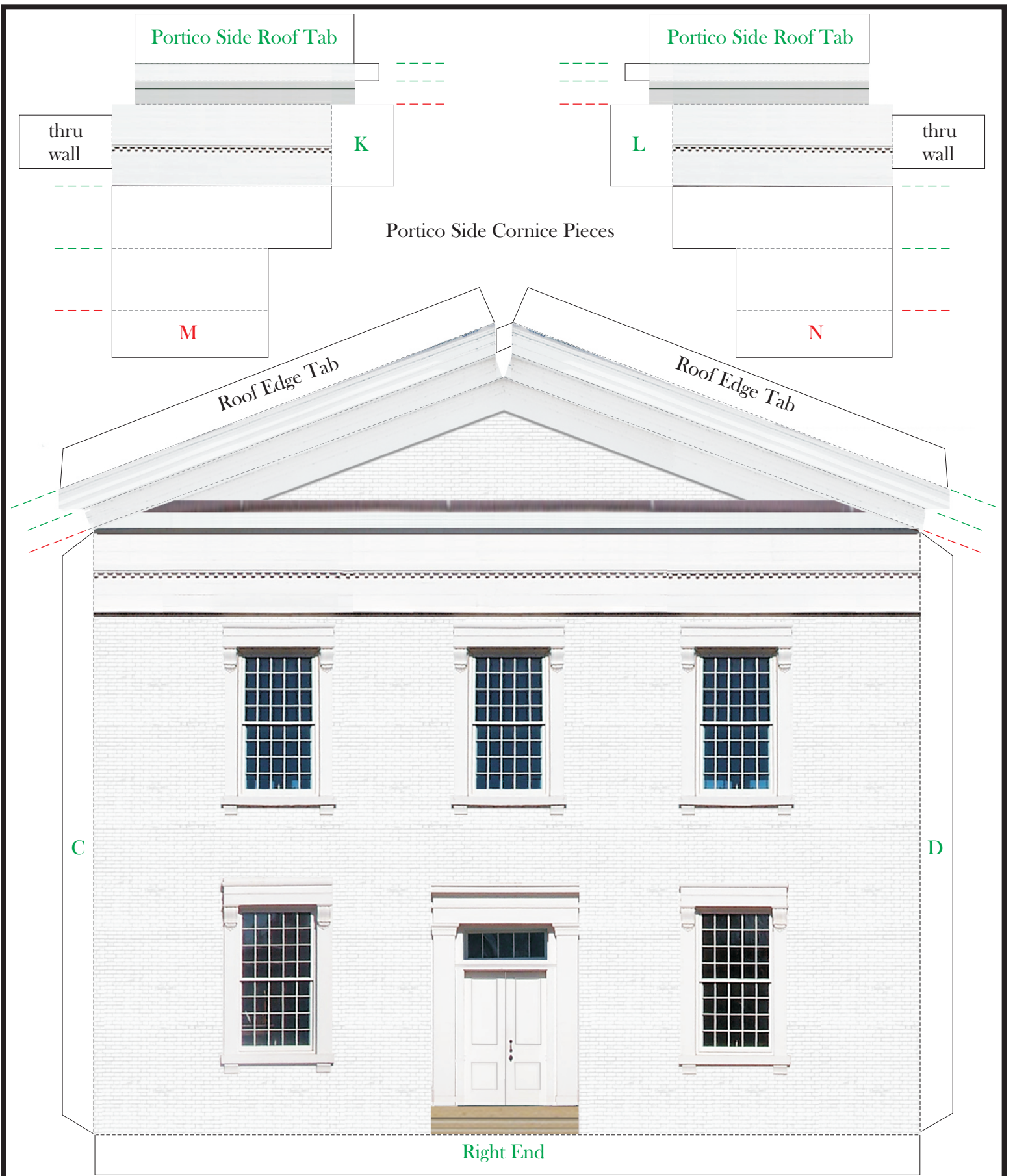
C

Glue Back Wall of Front Porch Here

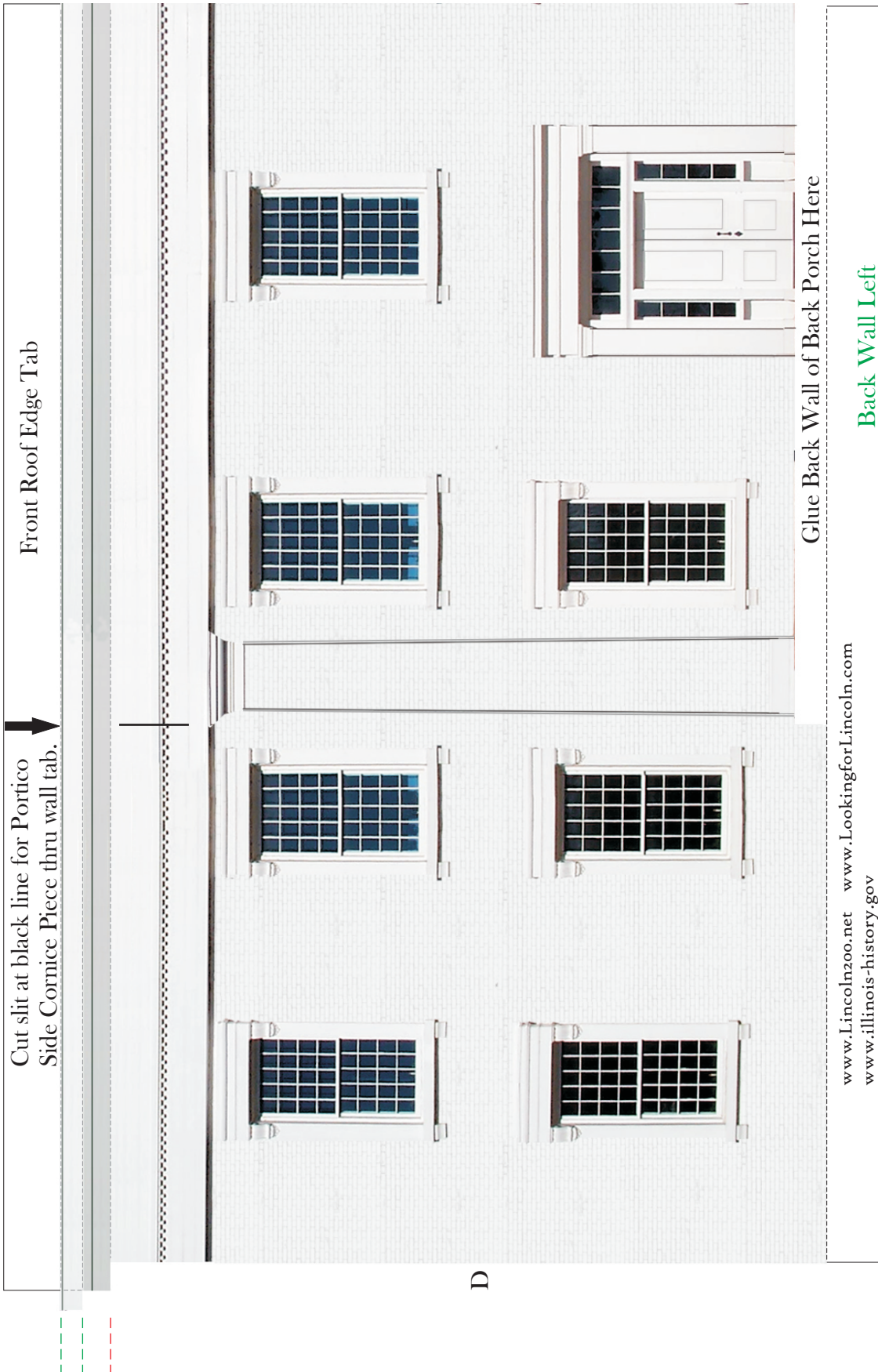
Front Wall Right

www.OldStateCapitol.org
www.BuildYourOwnMainStreet.org

BUILD YOUR OWN LINCOLN SITES



BUILD YOUR OWN LINCOLN SITES



Front Roof Edge Tab

Cut slit at black line for Portico Side Cornice Piece thru wall tab.

Glue Back Wall of Back Porch Here

Back Wall Left

www.Lincoln200.net www.LookingforLincoln.com
www.illinois-history.gov

BUILD YOUR OWN LINCOLN SITES

X

X

Back Wall of Back Porch

X

X

CB

CB

CB

CB

X

X

X

X

Cut slit at black line for Portico
Side Cornice Piece thru wall tab. ↓

Front Roof Edge Tab



E

B

Glue Back Wall of Back Porch Here

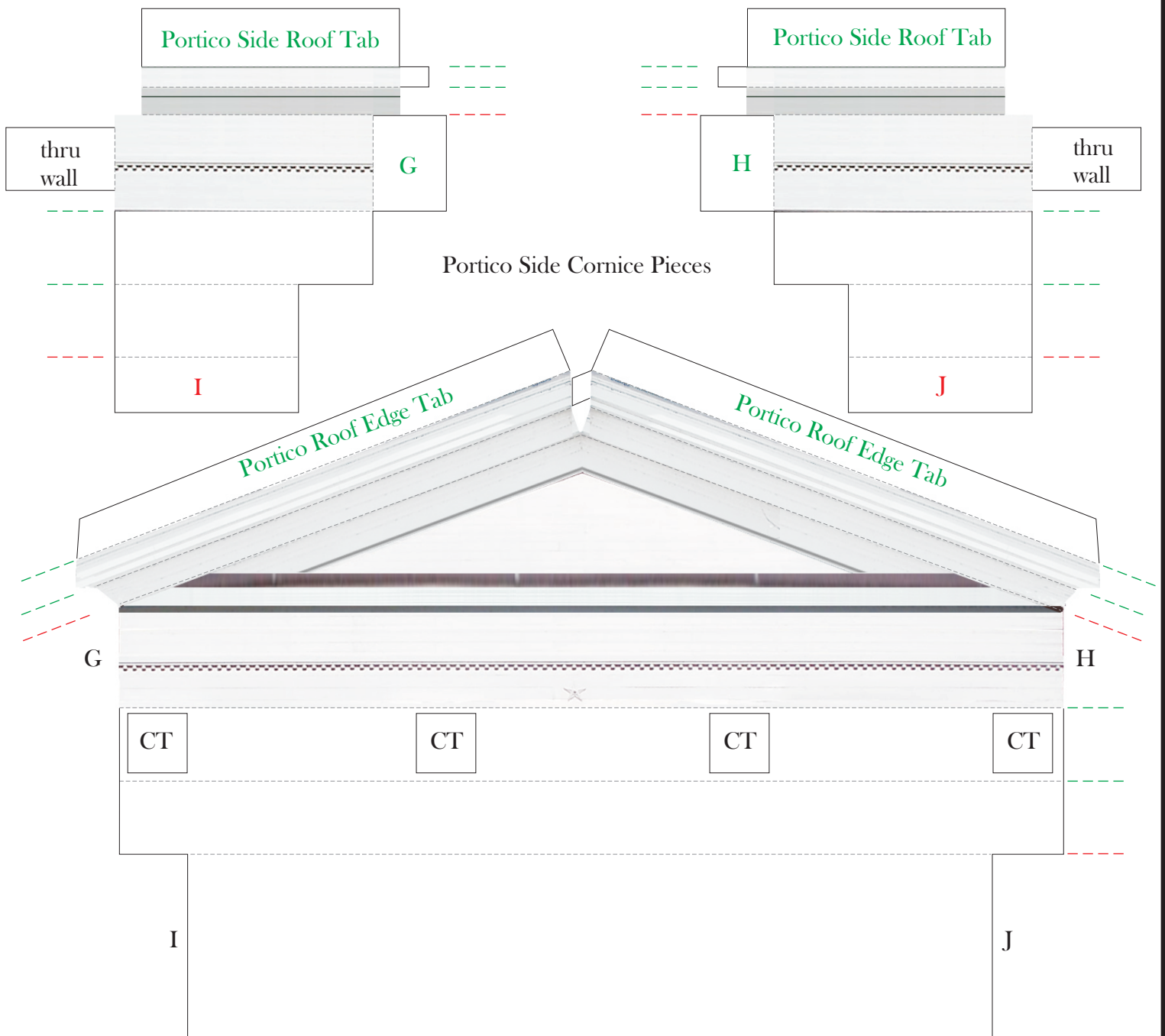
Back Wall Right

www.OldStateCapitol.org
www.BuildYourOwnMainStreet.org

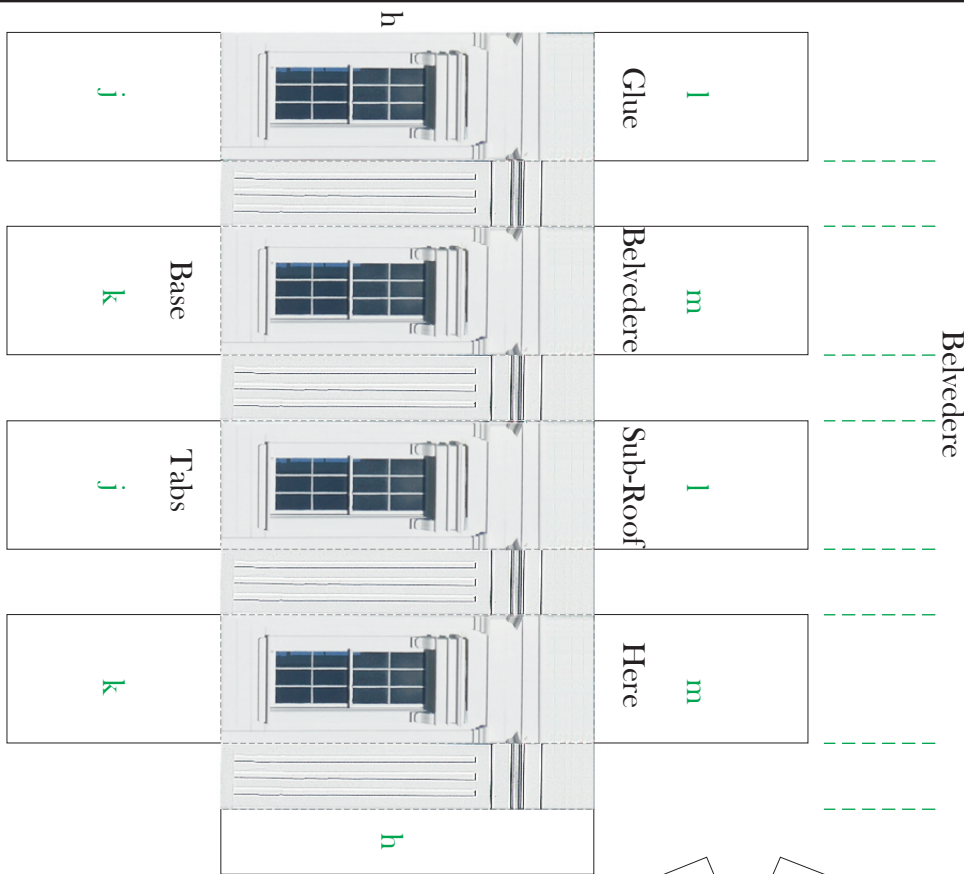
BUILD YOUR OWN LINCOLN SITES

To Assemble Front and Back Porch/Portico:

1. Cut out the Front and Back Porch Floors. Fold all dotted lines and glue corners together at “x’s” to form a low box.
2. Glue the back wall of the Porch Floors to the Front and Back walls where indicated.
3. At this point set the model on a sheet of poster board, square all corners, and mark the outline of the building walls and the Porch Floors. Set building aside, cut out the poster board base, and glue the model to this base.
4. Cut out the Front and Back Porticos and the Portico Side Cornice Pieces. Fold all dotted lines.
5. Glue the Front Portico to the Portico Side Cornice Pieces using tabs G - J. Repeat for the Back using tabs K - N.
6. Cut out the 8 Columns and fold all dotted lines. Glue each Column into a tube of square cross section using the “x’s.”
7. Glue the CT tabs to close each Column Top, and the CB tabs to close each Column Base.
8. Glue the Front Portico to the Front Wall by inserting thru wall tabs through slits and gluing to backside of Front Wall.
9. You may want to use a Column or two inserted dry to support the Portico while glue sets. Repeat for Back Portico.



BUILD YOUR OWN LINCOLN SITES

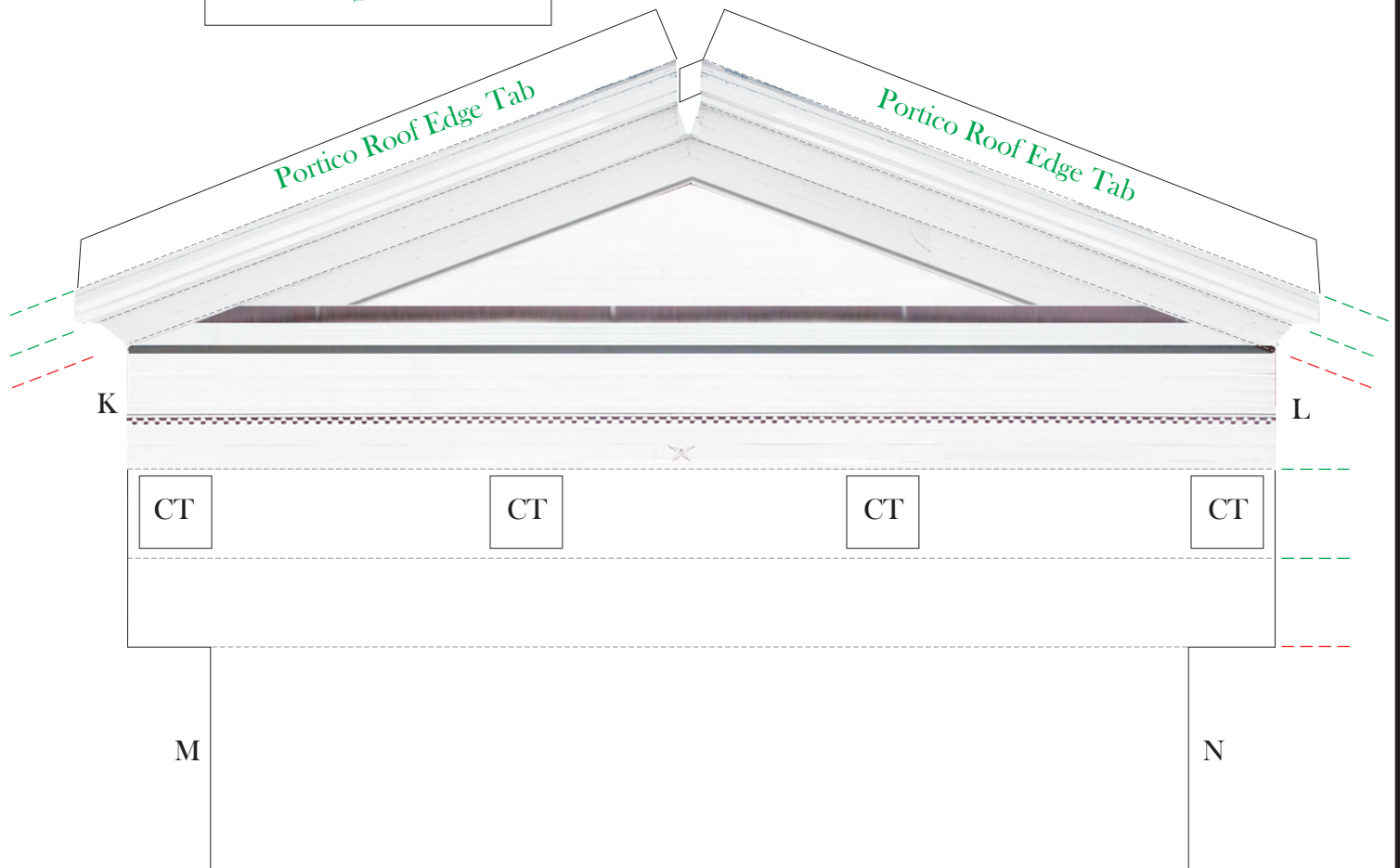


To Assemble Belvedere:

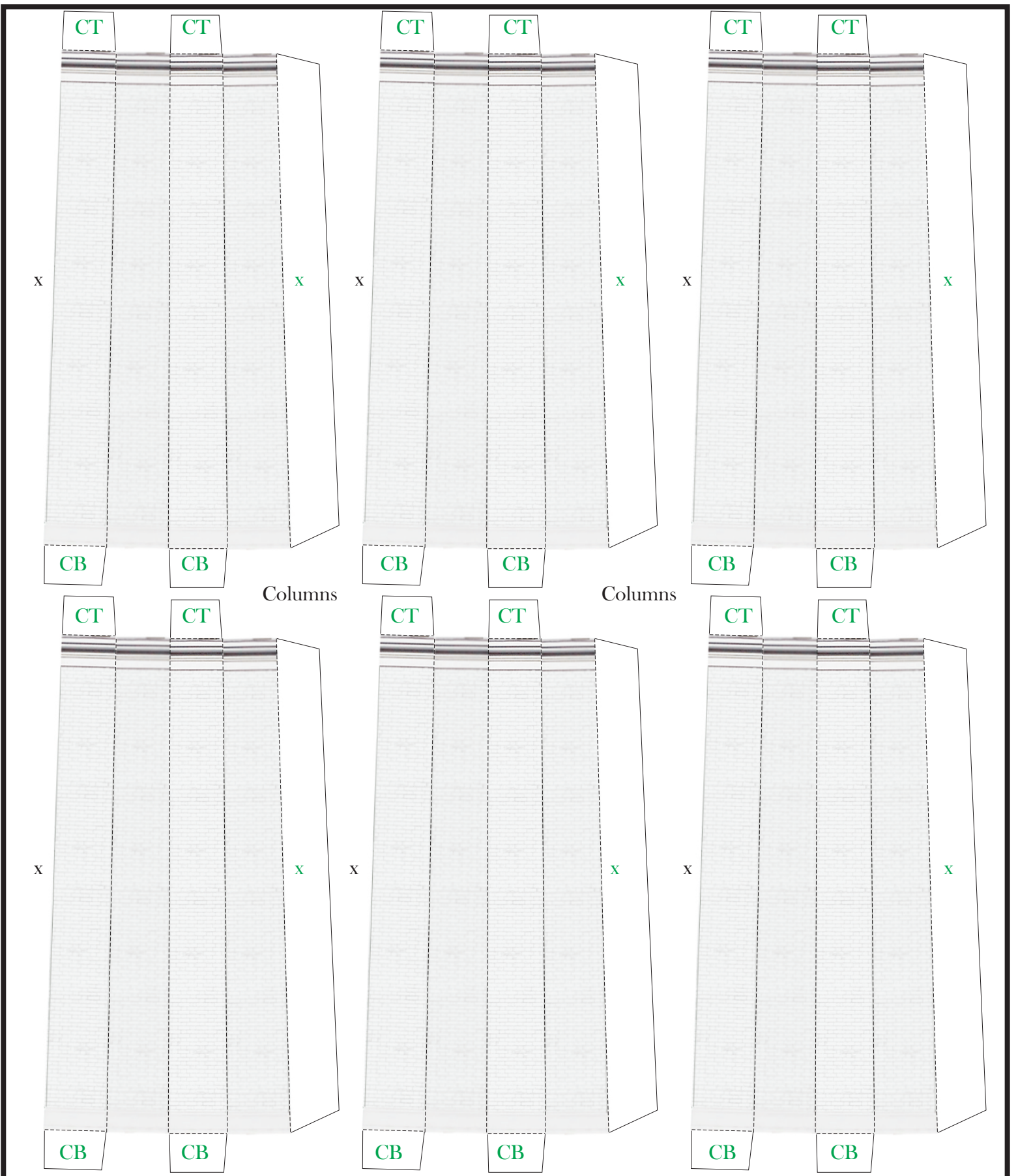
1. Cut out the piece, and Fold all dotted lines.
2. Glue into an octagon using tab h.
3. Glue tabs j and k exactly over the matching j and k tabs to form base.
4. Glue tabs l - m exactly over matching l and m tabs to form the ceiling.
5. Set aside for later.

To Assemble the Columns:

1. Glue the first Porch Column to the Porch Floor at CB, column base, and to the Portico at CT, column top.
2. Repeat for remaining Columns.

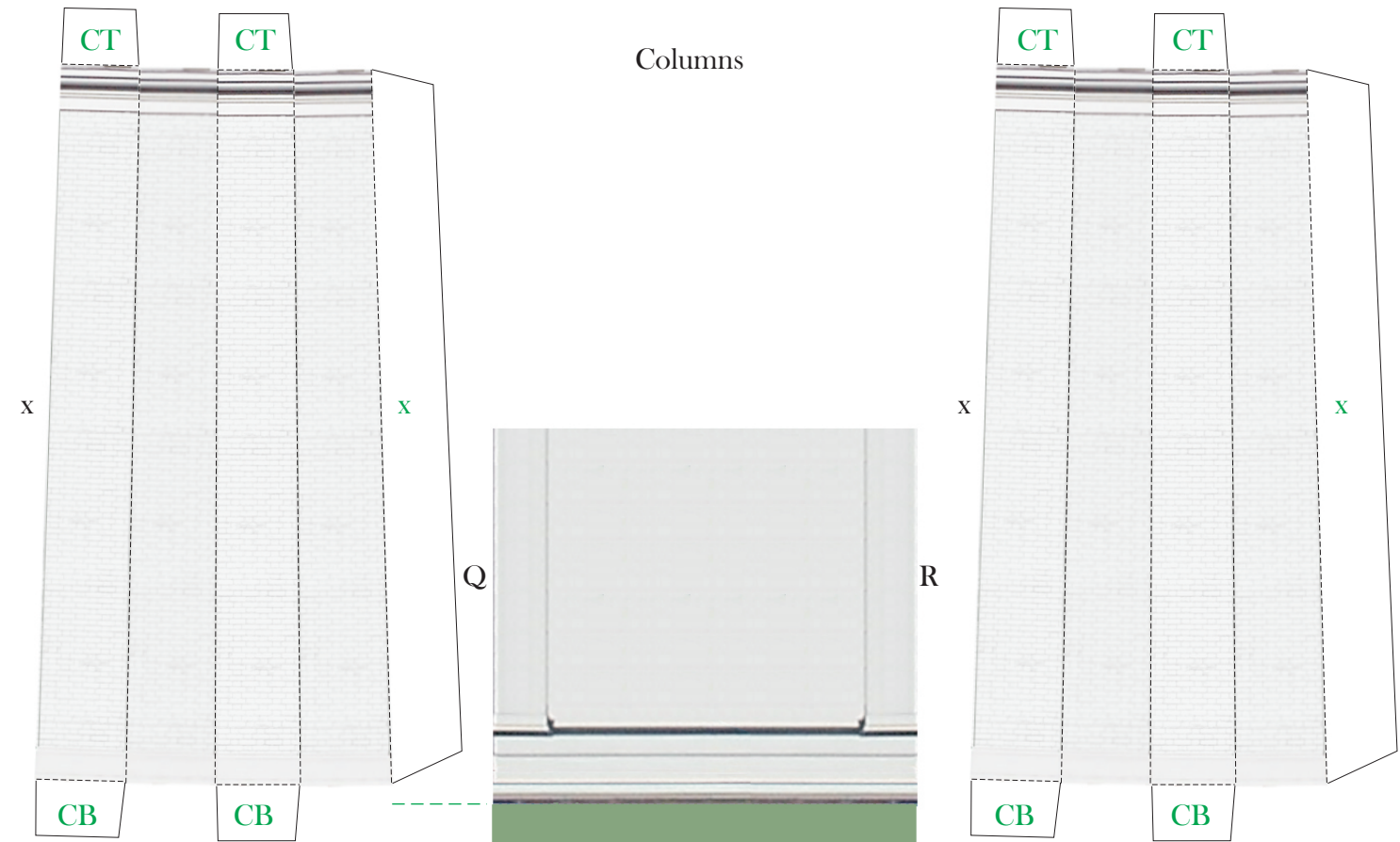


BUILD YOUR OWN LINCOLN SITES



BUILD YOUR OWN LINCOLN SITES

Columns



Glue Belvedere
Sub-Base Here

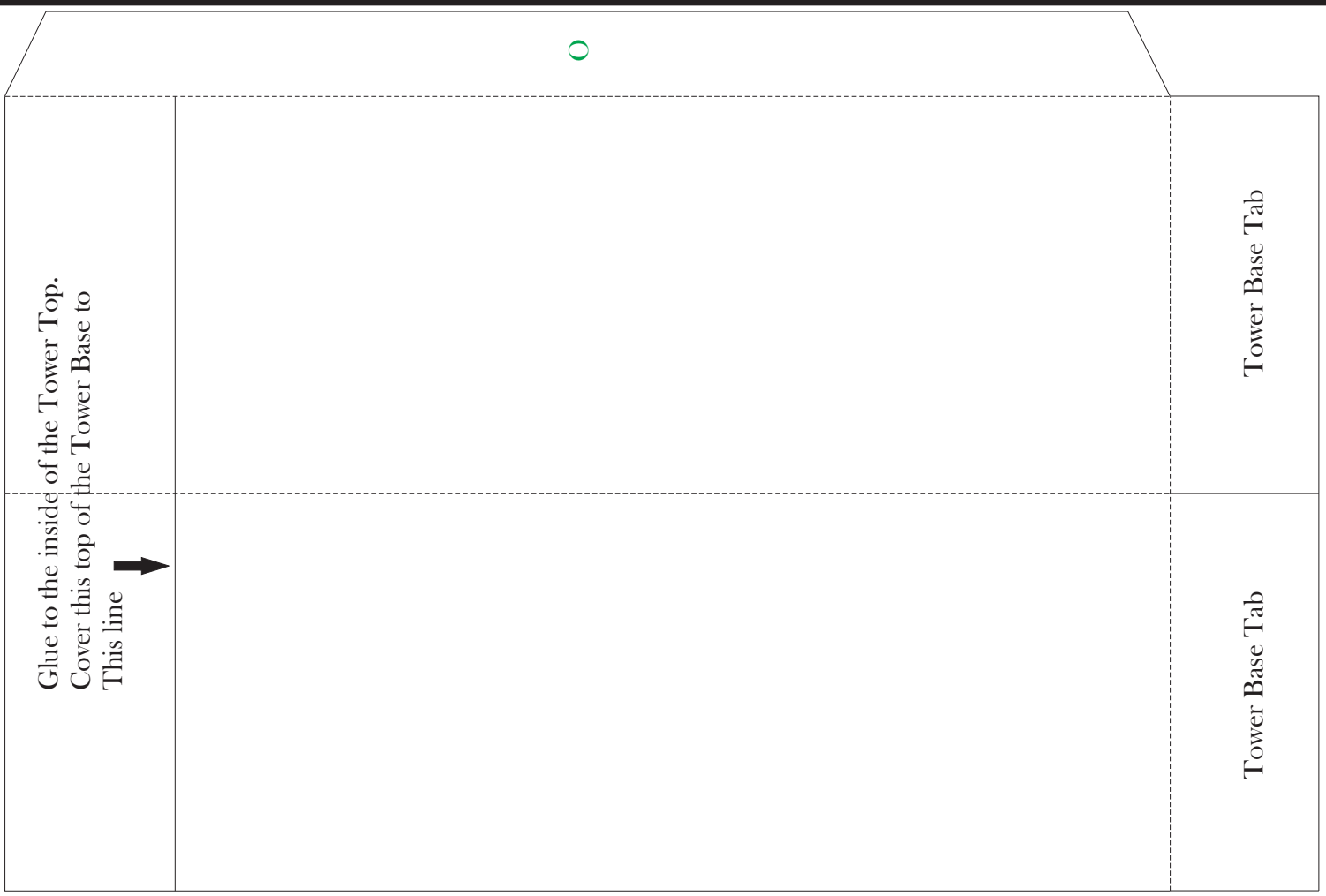


Cut thru solid lines, score
dotted lines, and fold up flaps.

Tower Top

Cut thru solid lines, score
dotted lines, and fold up flaps.

BUILD YOUR OWN LINCOLN SITES



P

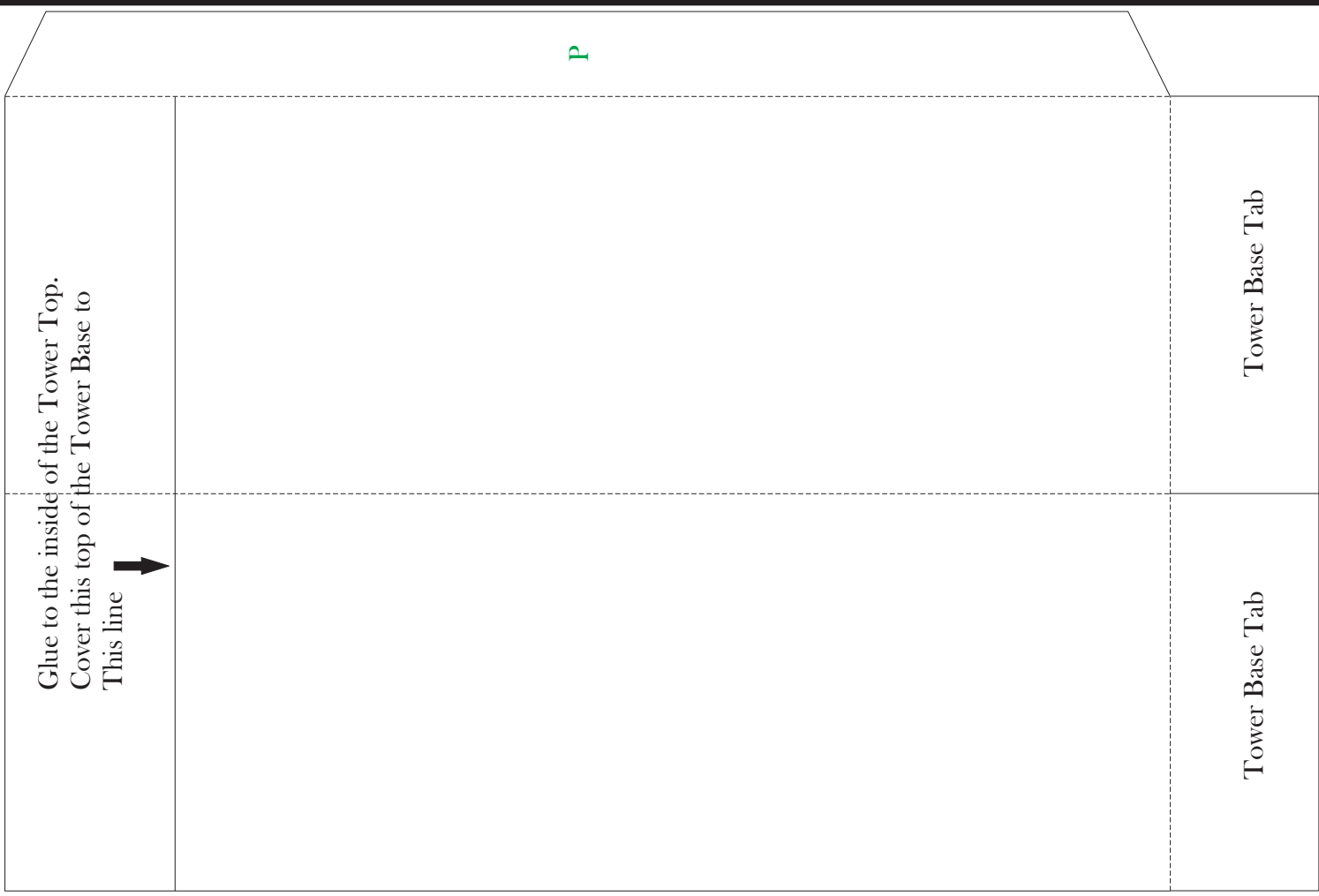
To Assemble Tower Top, Tower Base, and Main Roof:

1. Cut out the Tower Top. Cut open flaps were indicated. Fold all dotted lines.
2. Glue the Tower Top into a box using tabs Q - T.
3. Cut out the 2 Tower Base pieces. Fold all dotted lines. Glue into a tube using tabs O and P.
4. Glue the Tower Base inside the Tower Top. The bottom of the Tower Top will come to the line indicated on the Base.
5. Glue the Tower Base Tabs together to form closed tube.
6. Set the Tower into the center of the walls. The poster board base will support it.
7. Cut out the Left and Right End Roof pieces. Cut the slits for chimneys, to be inserted later. Fold all dotted lines.
8. Glue the Roofs together using tabs U and V.
9. Fit the Roof around the Tower and over the Walls. Once it fits well, fold out the Tower side tabs and glue the Roof to the Tower side tabs, Side Wall roof edge tabs, and End Wall roof edge tabs.

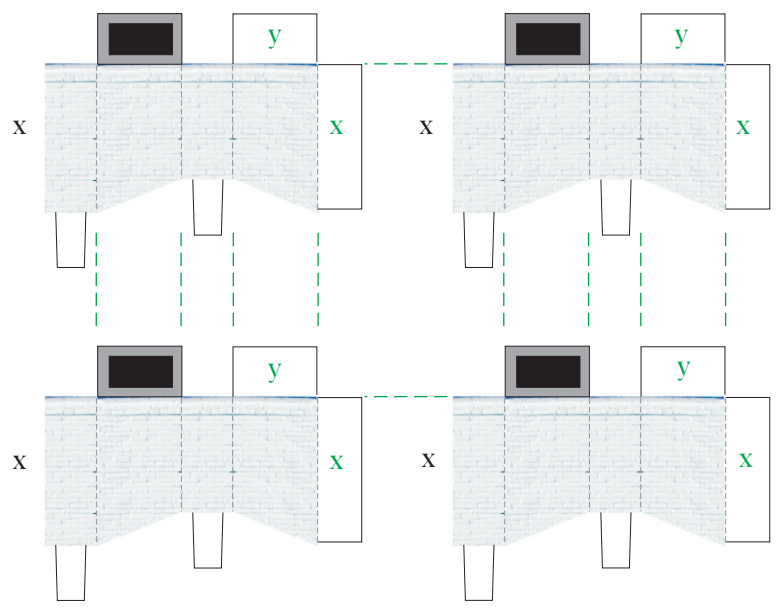
To Assemble Chimneys:

1. Cut out the four Chimneys. Fold all dotted lines.
2. Glue each Chimney into a close top box using tab x and y.
3. Insert the first Chimneys bottom tabs into two of the slits previously cut into the Main Roof. The Chimney bottom will meet the angle of the Main Roof.
4. Repeat for the other three Chimneys.

BUILD YOUR OWN LINCOLN SITES



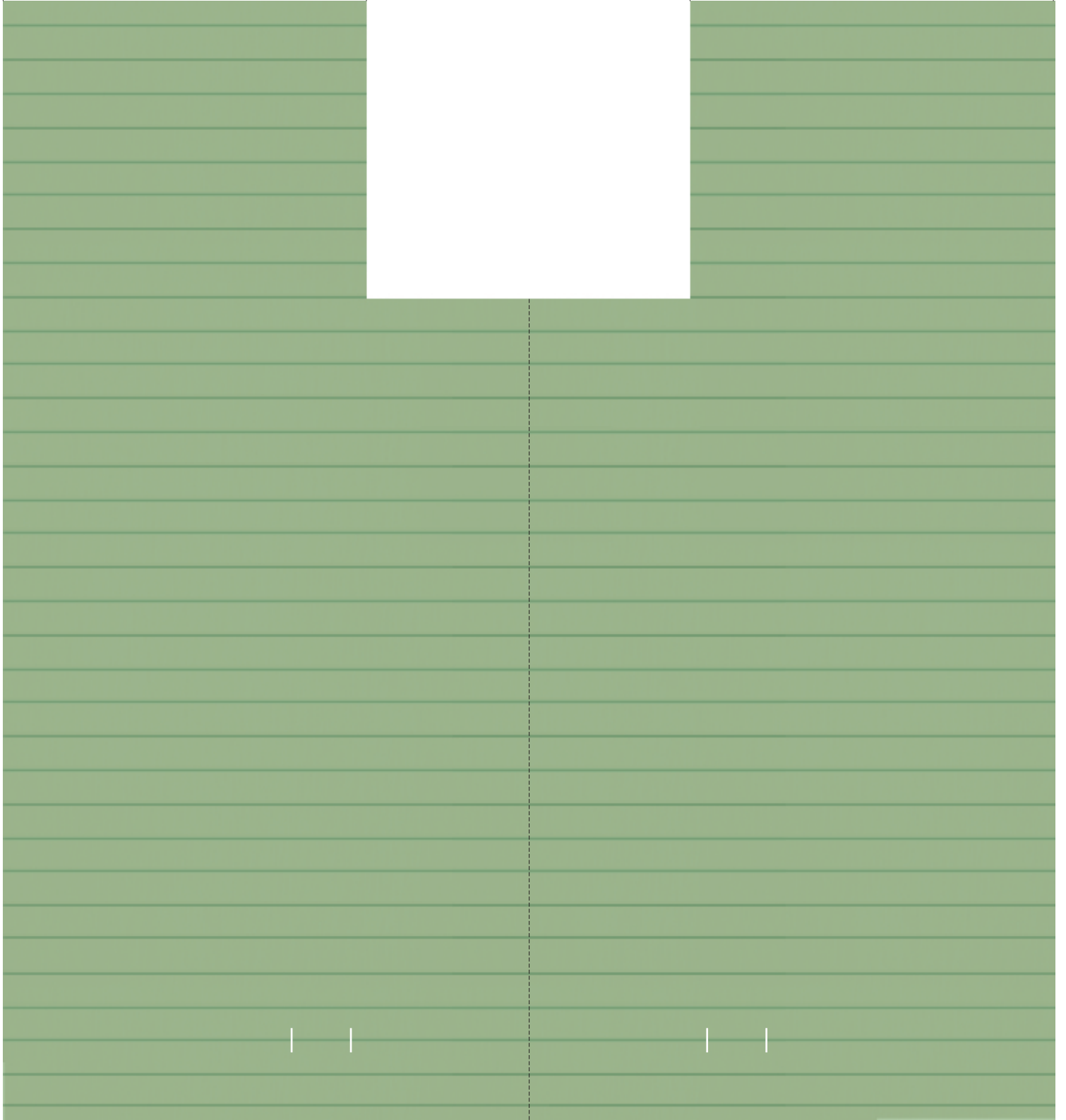
O



BUILD YOUR OWN LINCOLN SITES

U

V



Left End Roof



Cut slits at white lines for chimney tabs



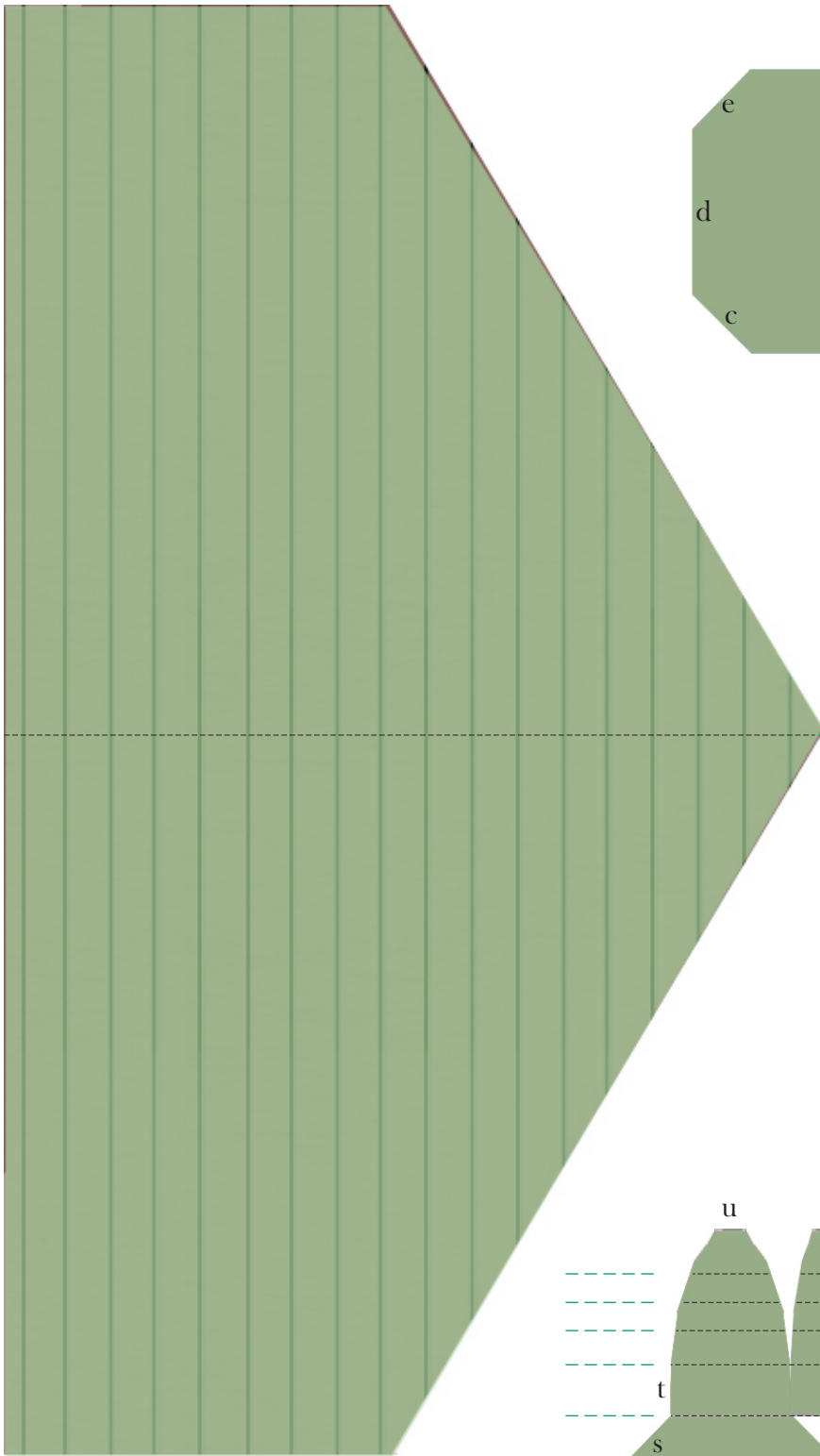
BUILD YOUR OWN LINCOLN SITES

To Assemble Porch Roofs, Belvedere Sub-Base, and Belvedere:

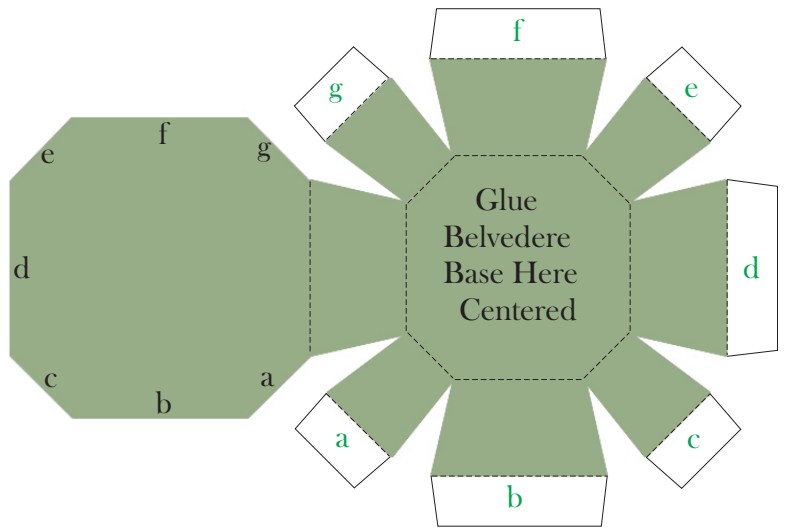
1. Cut out the Front and Back Porch Roofs. Fold all dotted lines.
2. Glue the Front Porch Roof to the Main Roof, Portico Roof Edge Tabs, and the Portico Side Roof Tabs. Be sure the Roof projects equally at the edge tabs.
3. Glue the Back Porch Roof to the Main Roof, Portico Roof Edge Tabs, and the Portico Side Roof Tabs.
4. Cut out the Belvedere Sub-Base. Fold all dotted lines.
5. Glue the Belvedere Sub-Base together using tabs a - g.
6. Glue the Belvedere Sub-Base to the top of the Tower.
7. Glue the bottom of the Belvedere to the Belvedere Sub-Base.



BUILD YOUR OWN LINCOLN SITES



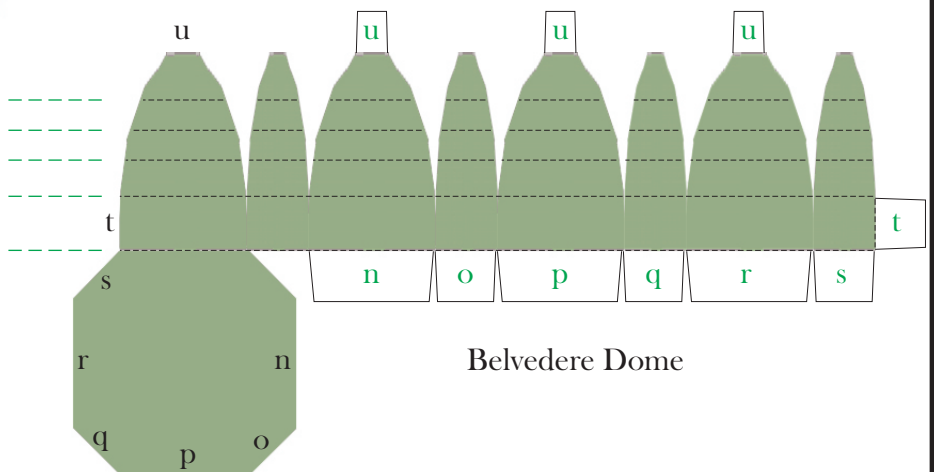
Back Porch Roof



Belvedere Sub-Base

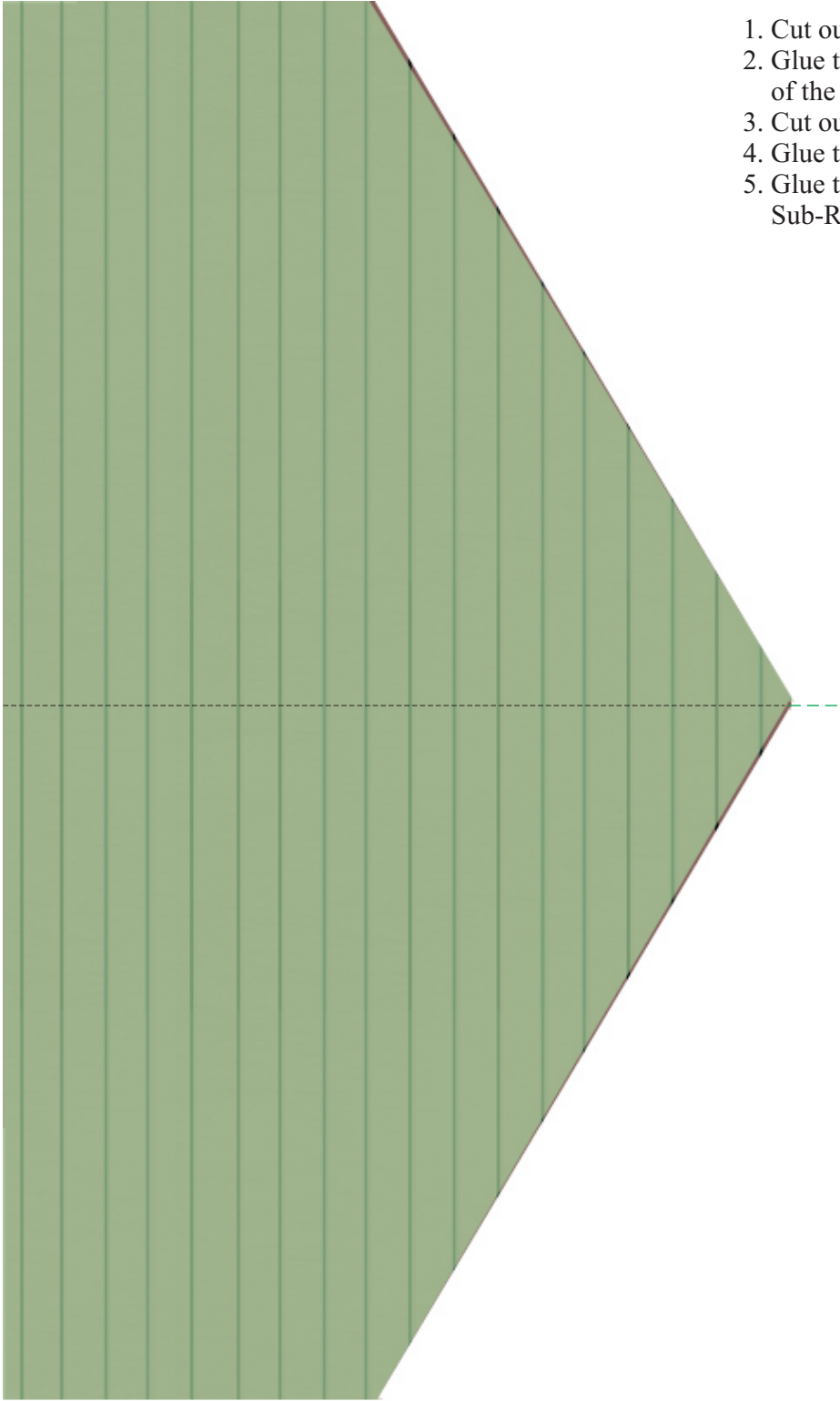


Belvedere Sub-Roof



Belvedere Dome

BUILD YOUR OWN LINCOLN SITES



To Assemble Belvedere Sub-Roof and Belvedere Dome:

1. Cut out the Belvedere Sub-Roof. Fold all dotted lines.
2. Glue the Belvedere Sub-Roof centered on the top of the Belvedere.
3. Cut out the Belvedere Dome. Fold all dotted lines.
4. Glue the Belvedere Dome together using tabs n - u.
5. Glue the Belvedere Dome to the top of the Belvedere Sub-Roof, centered.

Front Porch Roof

BUILD YOUR OWN LINCOLN SITES