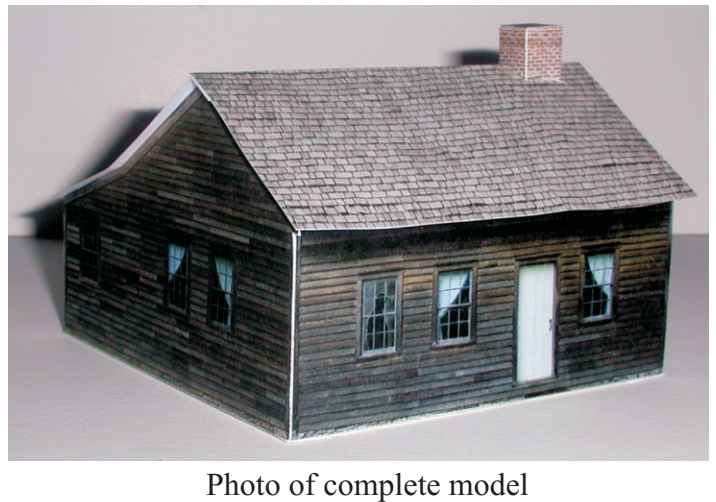
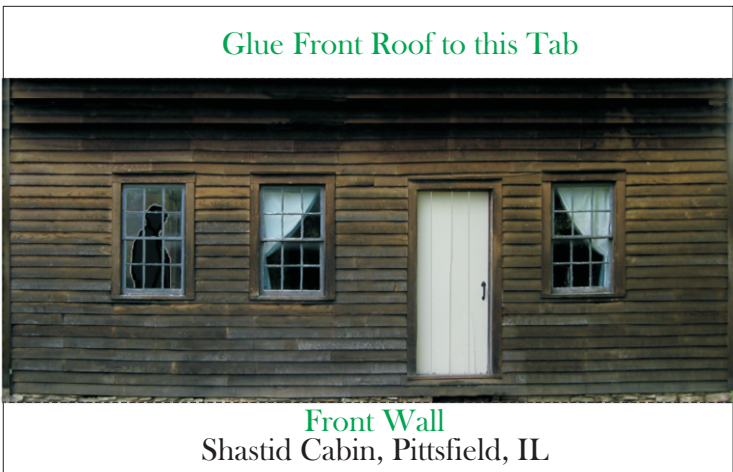
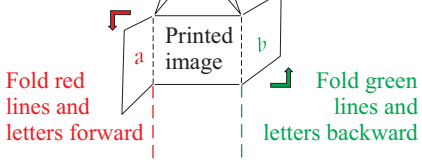


**Basic Directions:**

Lightly score then fold  
black dotted lines



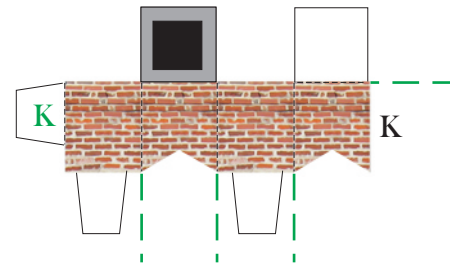
BUILD YOUR OWN LINCOLN SITES

*To Add Sides and Back:*

1. Cut out the Side and Back pieces. Fold all dotted lines.
2. Glue the Front onto the Left and Right Sides using tabs A and B.
3. Glue the Back onto the sides using tabs C and D.
4. Glue the corners of all bottom tabs to create a base.

*To Add Roofs and Chimney:*

1. Cut out the Front and Back Roof pieces. Cut thru the Roof pieces at the white lines for the chimney later. Fold all dotted lines.
2. Glue the Back roof to the Sides using tabs G thru J and to the Back wall tab.
3. Glue the Front Roof to the Sides, using tabs E and F, to the Front wall tab, and to the back roof tab. The Front Roof top edge will project over the ridge 1/16th inch approximately.
4. Cut out the Chimney and glue up into a box using tab K and the blank tab under the chimney top.
5. Glue the Chimney to the Roofs by inserting the tab in the slots.



Cut slot at white line for Chimney tab. →

Fold this tab down about 30 deg. to fit pitch of roof.  
The top of the Front roof will be glued to here.



Bottom edge of Back Roof

← Cut slot at white line for Chimney tab.



Bottom edge of Front Roof

## BUILD YOUR OWN LINCOLN SITES