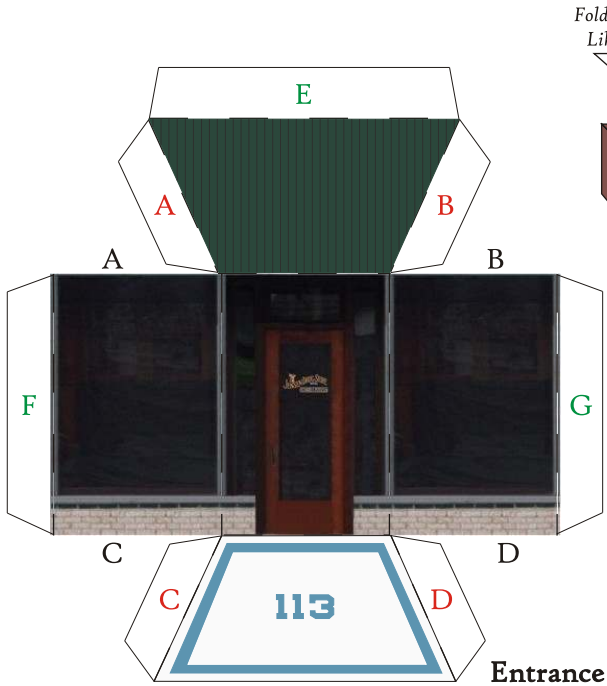


Fold Cornice  
Like This



T  
Fold  
L  
Fold  
M  
Fold  
Fold



**Directions:**

*Basic Directions:*

1. Be careful to cut around all tabs.
  2. Dotted lines are to be folded. Green dotted lines and green letters should be folded backward. Red dotted lines and red letters should be folded forward.
  3. Letters indicate how pieces should fit together.
- TIP: Lightly score dotted lines to make folding easier.

*To Make Recessed Entrance:*

1. Cut out Entrance piece.
2. Fold all dotted lines.
3. Glue tabs A, B, C and D behind windows.
4. Entrance should pop back when finished.

*To Finish the Front:*

1. Cut out Front piece. Cut a slit along the white line for the Sign.
2. Fold all dotted lines. The five folds at the top create a projecting cornice. (As shown above)
3. Glue the Entrance to the Front using tabs E, F and G.

BUILD YOUR OWN ILLINOIS MAIN STREET



ILLINOIS MAIN STREET

ILLINOIS HISTORIC PRESERVATION AGENCY  
One Old State Capitol Plaza Springfield, Illinois 62701 217.782.4836  
OFFICE OF LIEUTENANT GOVERNOR PAT QUINN  
www.illinois-history.gov www.illinoismainstreet.org

JENSEN DRUG STORE  
MOMENCE, ILLINOIS  
www.buildyourownmainstreet.com

Drawn By  
KMC

Date  
7/06

PAGE  
1 of 5



© 2006 ILLINOIS HISTORIC PRESERVATION AGENCY

Left Side

*To Add Sides and Back:*

1. Cut out the Side and Back pieces.
2. Fold all dotted lines.
3. Glue the Front onto the Left and Right Sides using tabs H and I.
4. Glue the Back onto the sides using tabs J and K.
5. Glue Side tabs L, M, N and O to the Front. These should fit onto the backside of the Front's projecting cornice.
6. Glue the corners of all bottom tabs together to create a base. (P, Q, R and S)
7. Glue roof parapet overlaps together using tabs T and U.

# BUILD YOUR OWN ILLINOIS MAIN STREET



**ILLINOIS MAIN STREET**  
 ILLINOIS HISTORIC PRESERVATION AGENCY  
 One Old State Capitol Plaza Springfield, Illinois 62701 217.782.4836  
 OFFICE OF LIEUTENANT GOVERNOR PAT QUINN  
 www.illinois-history.gov www.illinoismainstreet.org

**JENSEN DRUG STORE**  
 MOMENCE, ILLINOIS  
 www.buildyourownmainstreet.com

Drawn By  
 KMC  
 Date  
 7/06

**PAGE**  
 2 of 5



Q

[www.buildyourownmainstreet.com](http://www.buildyourownmainstreet.com)

[www.illinois-history.gov](http://www.illinois-history.gov)

[www.illinoismainstreet.org](http://www.illinoismainstreet.org)

R

*To Make Projecting Sign:*

1. Cut out Sign piece.
2. Fold all dotted lines.
3. Push the sign through the white slit on the Front and glue the V tabs to the back of the Front piece.

*To Make Chimney:*

1. Cut out Chimney piece.
2. Fold all dotted lines.
3. Glue tab W to the other side of the chimney to make a square tube.
4. Glue tab X down to enclose the top of the chimney.

**Right Side**

# BUILD YOUR OWN ILLINOIS MAIN STREET



## ILLINOIS MAIN STREET

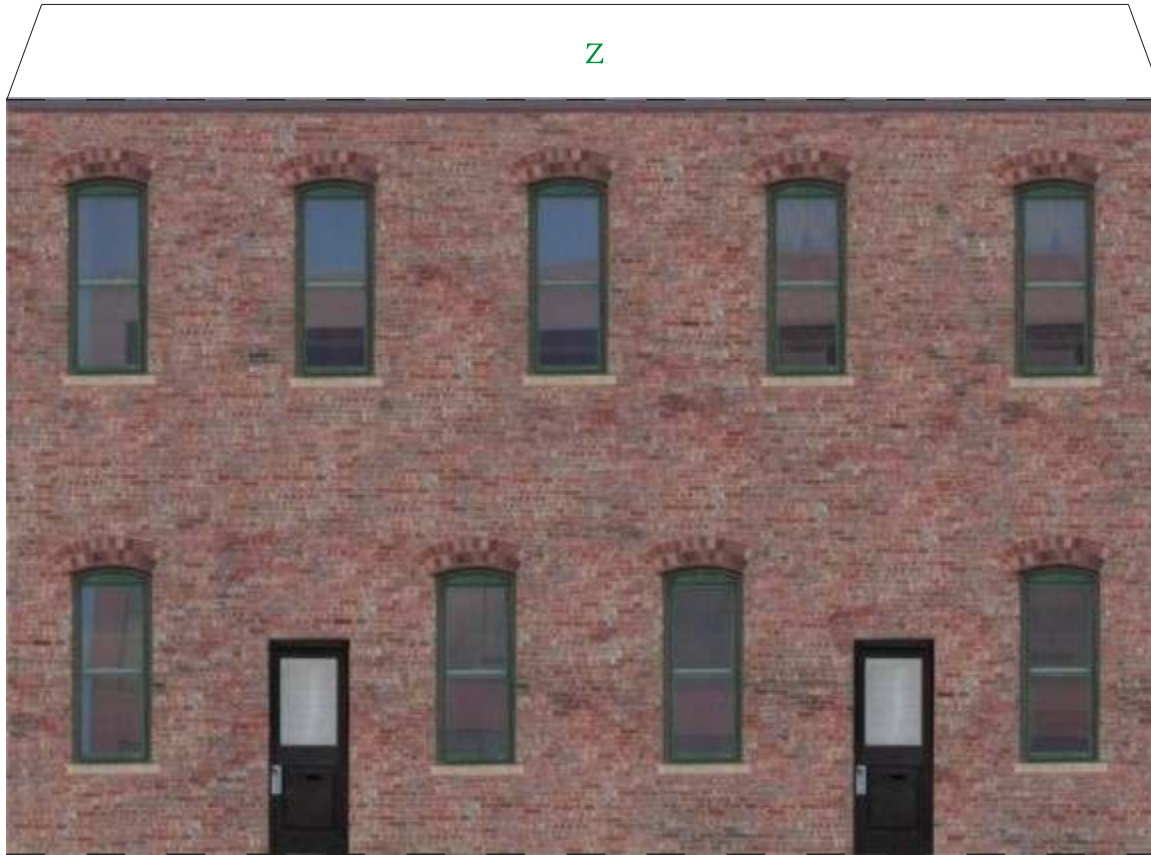
ILLINOIS HISTORIC PRESERVATION AGENCY  
 One Old State Capitol Plaza Springfield, Illinois 62701 217.782.4836  
 OFFICE OF LIEUTENANT GOVERNOR PAT QUINN  
[www.illinois-history.gov](http://www.illinois-history.gov) [www.illinoismainstreet.org](http://www.illinoismainstreet.org)

**JENSEN DRUG STORE**  
**MOMENCE, ILLINOIS**  
[www.buildyourownmainstreet.com](http://www.buildyourownmainstreet.com)

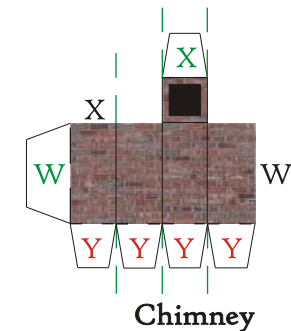
Drawn By  
KMC

Date  
7/06

**PAGE**  
3 of 5



The Jensen Drug Store building, built in 1890, doubled in size in 1913 when the new owner, N. P. Jensen, purchased the building along with the one next door and expanded the shop. The most prominent element of the building is its 1927 storefront. It features Tiffany brick pilasters, made locally by the Tiffany Brick Co., sand-blasted transom glass signs and copper window frames. This type of storefront is generally called an arcade front and the Jensen building is the best example of this in the region.



R Jensen Drug Store, 113 E. Washington St. Momence, Illinois S

Rear

To Install Chimney and Add the Roof:

1. Cut out the Roof piece. Cut out the square labeled Y and marked with a red x.
2. Fold all dotted lines.
3. Push Chimney through the square hole in the Roof.
4. Glue the Y tabs to the back of the Roof to attach chimney.
5. Glue tab Z on the Back piece to the underside of the Roof piece.
6. Glue tabs AA and BB to the back of the Side pieces. Roof should be slightly sloped.

# BUILD YOUR OWN ILLINOIS MAIN STREET



## ILLINOIS MAIN STREET

ILLINOIS HISTORIC PRESERVATION AGENCY  
 One Old State Capitol Plaza Springfield, Illinois 62701 217.782.4836  
 OFFICE OF LIEUTENANT GOVERNOR PAT QUINN  
[www.illinois-history.gov](http://www.illinois-history.gov) [www.illinoismainstreet.org](http://www.illinoismainstreet.org)

JENSEN DRUG STORE  
 MOMENCE, ILLINOIS  
[www.buildyourownmainstreet.com](http://www.buildyourownmainstreet.com)

Drawn By  
KMC

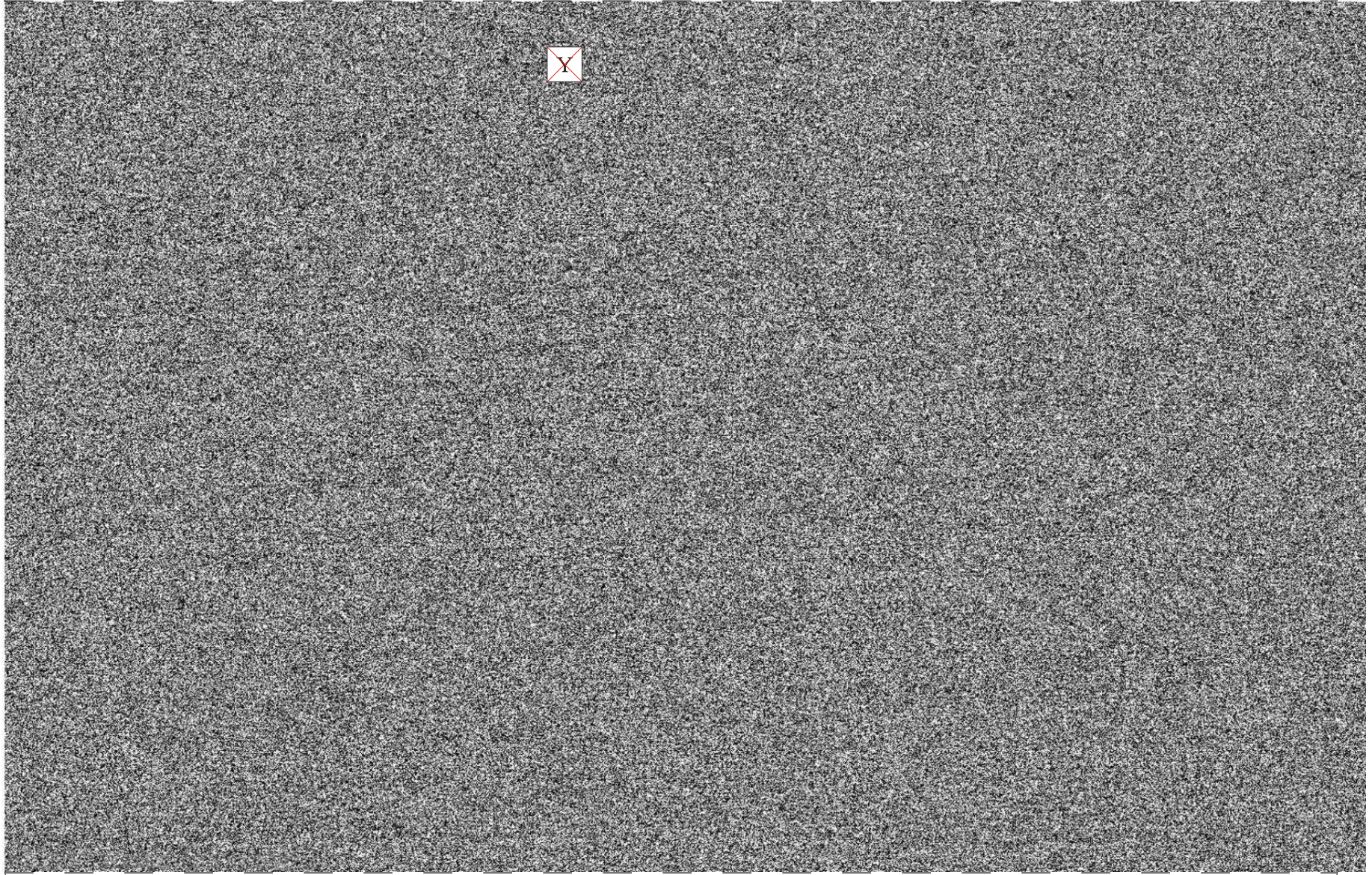
Date  
7/06

PAGE  
4 of 5

AA



Z



BB

Roof

# BUILD YOUR OWN ILLINOIS MAIN STREET



## ILLINOIS MAIN STREET

ILLINOIS HISTORIC PRESERVATION AGENCY  
One Old State Capitol Plaza Springfield, Illinois 62701 217.782.4836  
OFFICE OF LIEUTENANT GOVERNOR PAT QUINN  
[www.illinois-history.gov](http://www.illinois-history.gov) [www.illinoismainstreet.org](http://www.illinoismainstreet.org)

JENSEN DRUG STORE  
MOMENCE, ILLINOIS  
[www.buildyourownmainstreet.com](http://www.buildyourownmainstreet.com)

Drawn By  
KMC

Date  
7/06

PAGE  
5 of 5