

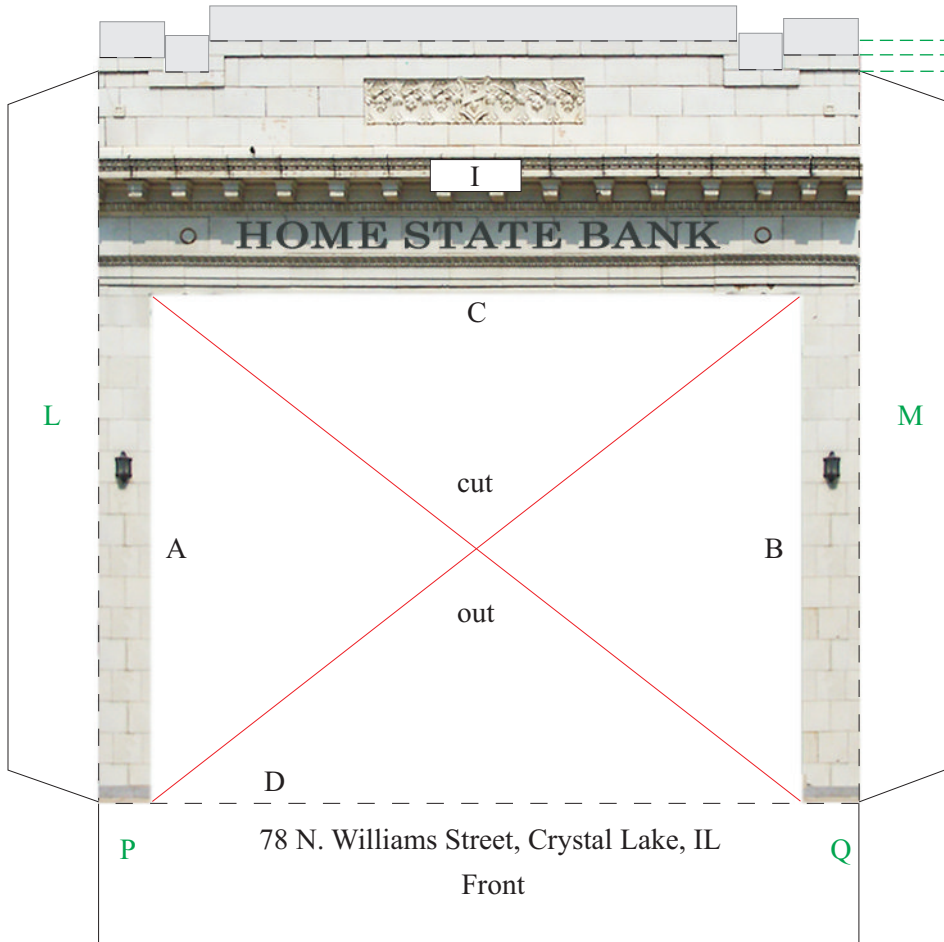
Directions:

Basic Directions:

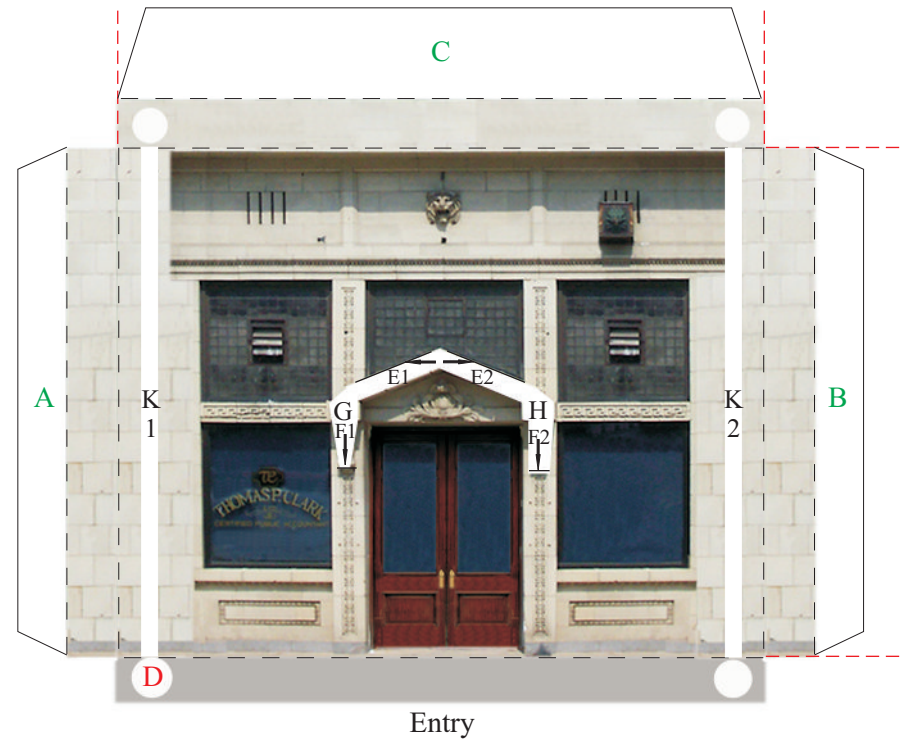
1. Be careful to cut around all tabs.
 2. Dotted lines are to be folded. Green dotted lines and green letters should be folded backward. Red dotted lines and red letters should be folded forward.
 3. Letters indicate how pieces should fit together.
- TIP: Lightly score dotted lines before cutting piece out to make folding easier.

To Attach Recessed Entrance to Front:

1. Cut out Front and Entry pieces.
2. Cut out area marked with red "X" on Front.
3. Fold all dotted lines.
4. Cut slits at 4 lines indicated by arrows over entry doors.
5. Glue tabs A, B, C and D to create recessed entry.



Fold lines
for cap stones



BUILD YOUR OWN ILLINOIS MAIN STREET



ILLINOIS MAIN STREET

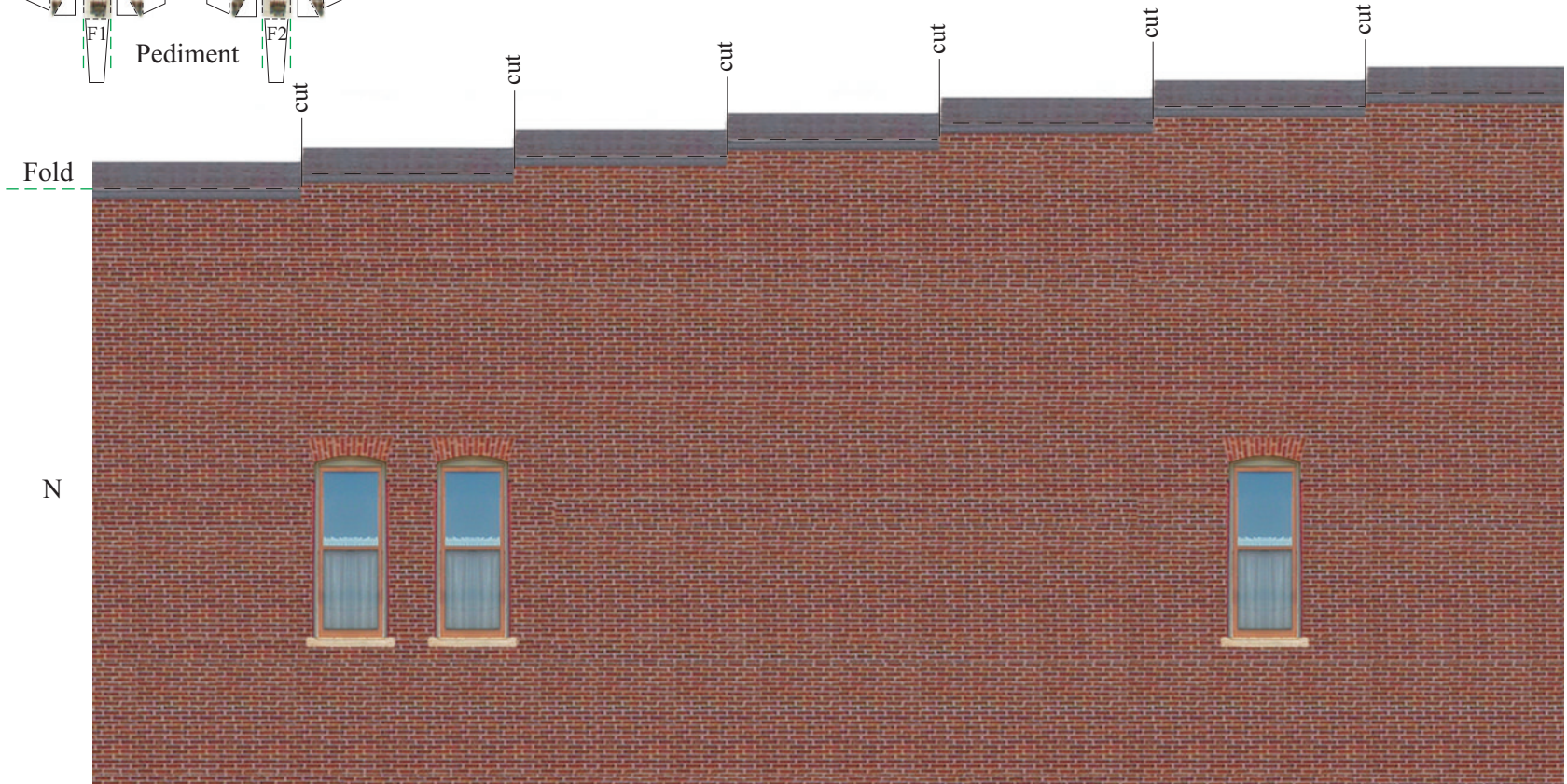
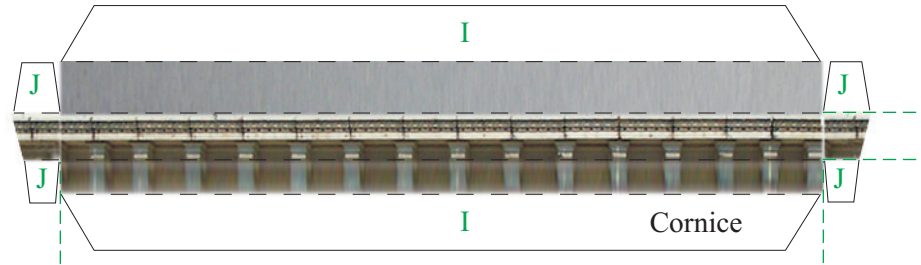
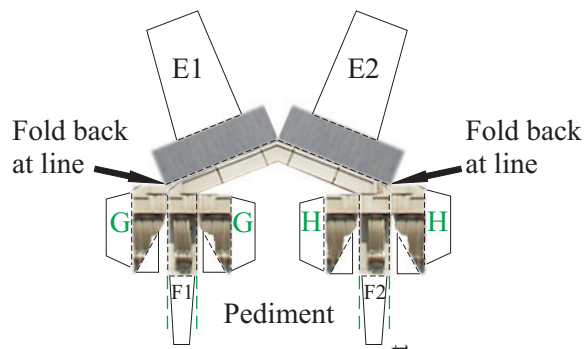
ILLINOIS HISTORIC PRESERVATION AGENCY
One Old State Capitol Plaza Springfield, Illinois 62701 217.782.4836
OFFICE OF LIEUTENANT GOVERNOR PAT QUINN
www.illinois-history.gov www.illinoismainstreet.org

78 N. Williams Street
CRYSTAL LAKE, IL
www.buildyourownmainstreet.com

Drawn By
Michael
Goebel-Bain

Date
6/07

PAGE
1 of 5



© 2007 ILLINOIS HISTORIC PRESERVATION AGENCY

Left Side

P

BUILD YOUR OWN ILLINOIS MAIN STREET



ILLINOIS MAIN STREET

ILLINOIS HISTORIC PRESERVATION AGENCY
One Old State Capitol Plaza Springfield, Illinois 62701 217.782.4836
OFFICE OF LIEUTENANT GOVERNOR PAT QUINN
www.illinois-history.gov www.illinoismainstreet.org

78 N. Williams Street
CRYSTAL LAKE, IL
www.buidyourownmainstreet.com

Drawn By
Michael
Goebel-Bain

Date
6/07

PAGE
2 of 5

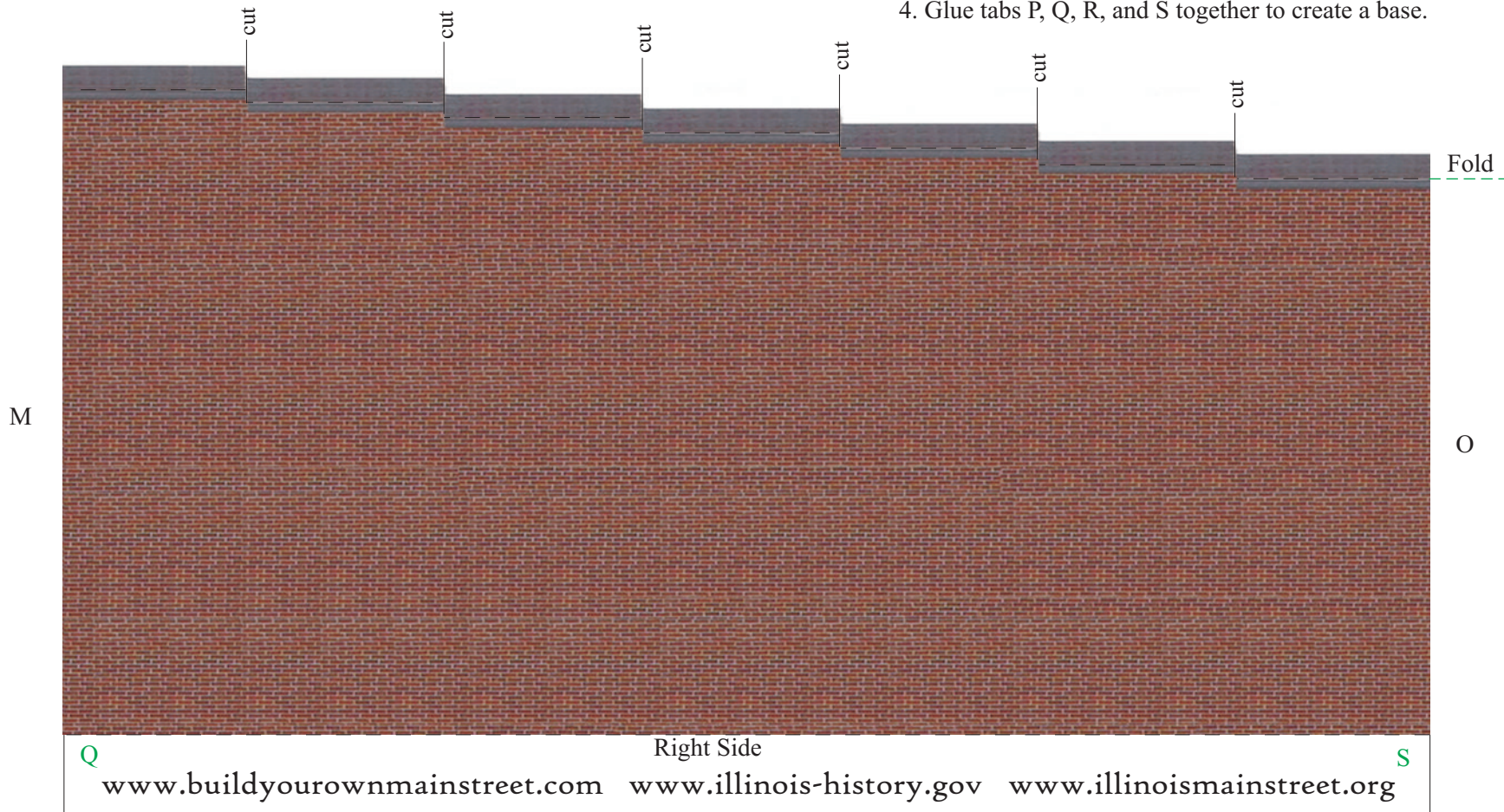
To Attach Pediment, Cornice, and Columns:

1. Cut out Pediment Piece. Fold all dotted lines.
2. Glue tabs marked G together and tabs marked H together.
3. Slip tabs E1, E2, F1, and F2 through slits in Entry and glue to back side.
4. Glue Pediment tabs G and H at corresponding letters on Entry.
5. Cut out Cornice and fold all dotted lines.
6. Glue Cornice tabs marked I together.
7. Tabs marked J attach to inside of Cornice to form ends.
8. Glue Cornice over image of cornice on the Front piece at location I.

9. Cut out Columns and fold all dotted lines to form hollow tubes.
10. Glue tabs K1 and K2 to inside of respective Column.
11. Glue columns at area indicated on Entry with white circles and lines.

To Attach Sides and Rear to Front:

1. Cut out Sides and Rear.
2. Fold all dotted lines.
3. Glue tabs L, M, N, and O to create the rectangular building.
4. Glue tabs P, Q, R, and S together to create a base.



www.buildyourownmainstreet.com www.illinois-history.gov www.illinoismainstreet.org

BUILD YOUR OWN ILLINOIS MAIN STREET



ILLINOIS MAIN STREET
 ILLINOIS HISTORIC PRESERVATION AGENCY
 One Old State Capitol Plaza Springfield, Illinois 62701 217.782.4836
 OFFICE OF LIEUTENANT GOVERNOR PAT QUINN
 www.illinois-history.gov www.illinoismainstreet.org

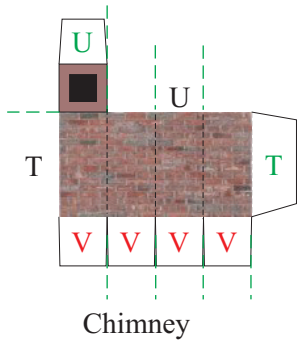
78 N. Williams Street
 CRYSTAL LAKE, IL
 www.buildyourownmainstreet.com

Drawn By
 Michael
 Goebel-Bain
 Date
 6/07

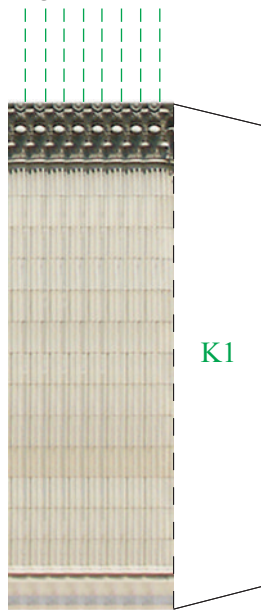
PAGE
 3 of 5

To Install Chimney and Add the Roof:

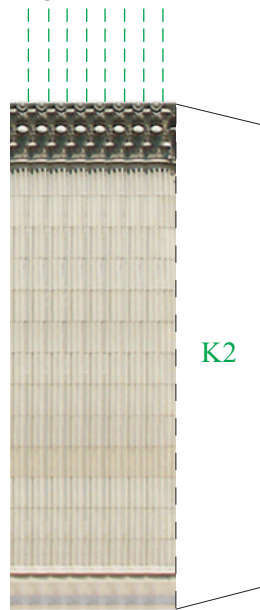
1. Cut out Chimney piece and fold all dotted lines.
2. Glue tab T to the other side of the chimney to make a square tube.
3. Glue tab U down to enclose the top of the chimney.
4. Cut out the section of the Roof marked with a red "X".
5. Cut out the Roof piece. Fold all dotted lines.
6. Push Chimney through the square hole in the Roof.
7. Glue tabs V to the back of the Roof to attach chimney.
8. Glue tab W on the Back to the Roof's underside.
9. Glue tab X to the back of the Front. It will fit slightly below the folded back parapet.
10. Glue tabs Y and Z to the back of the Sides.
11. Roof will be slightly sloped.



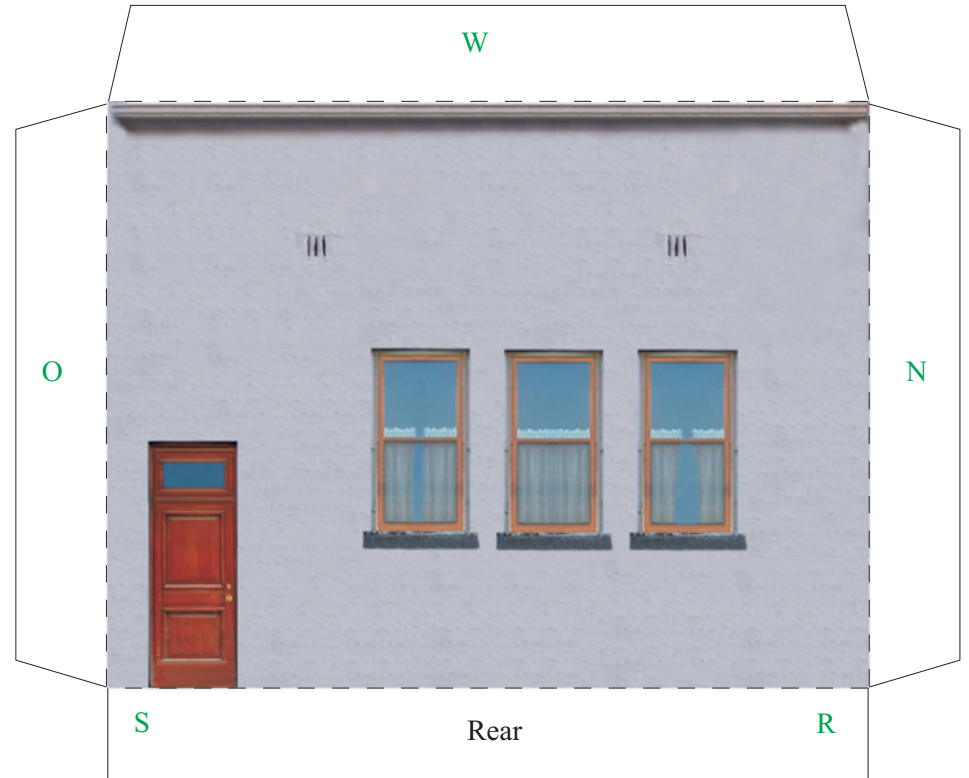
Score and bend along lines indicated for full height of column



Score and bend along lines indicated for full height of column



Columns



BUILD YOUR OWN ILLINOIS MAIN STREET



ILLINOIS MAIN STREET

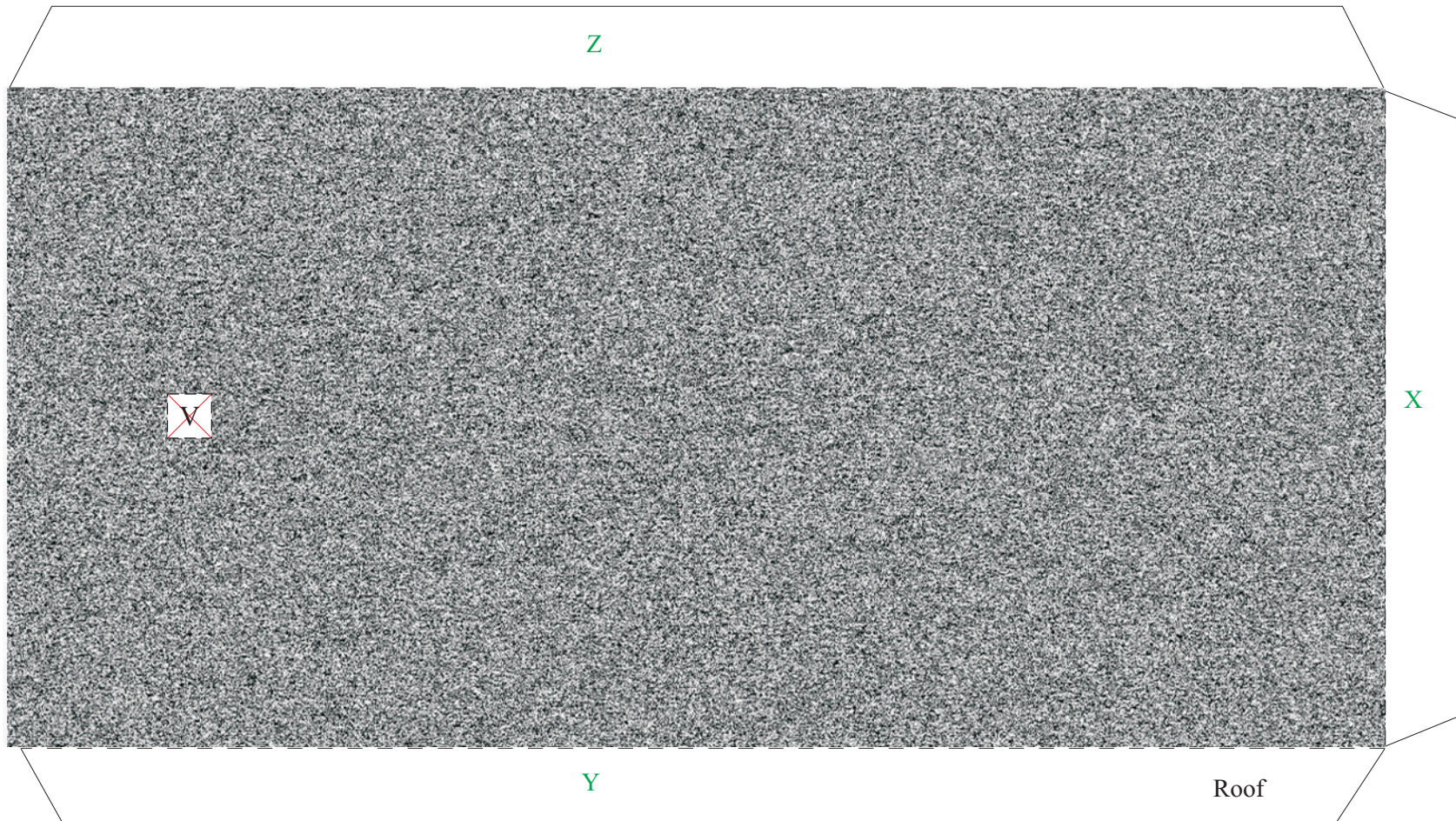
ILLINOIS HISTORIC PRESERVATION AGENCY
 One Old State Capitol Plaza Springfield, Illinois 62701 217.782.4836
 OFFICE OF LIEUTENANT GOVERNOR PAT QUINN
www.illinois-history.gov www.illinoismainstreet.org

78 N. Williams Street
 CRYSTAL LAKE, IL
www.builyourownmainstreet.com

Drawn By
 Michael
 Goebel-Bain

Date
 6/07

PAGE
 4 of 5



BUILD YOUR OWN ILLINOIS MAIN STREET



ILLINOIS MAIN STREET

ILLINOIS HISTORIC PRESERVATION AGENCY
 One Old State Capitol Plaza Springfield, Illinois 62701 217.782.4836
 OFFICE OF LIEUTENANT GOVERNOR PAT QUINN
www.illinois-history.gov www.illinoismainstreet.org

78 N. Williams Street
 CRYSTAL LAKE, IL
www.buildyourownmainstreet.com

Drawn By
 Michael
 Goebel-Bain

Date
 6/07

PAGE
 5 of 5