

Directions:

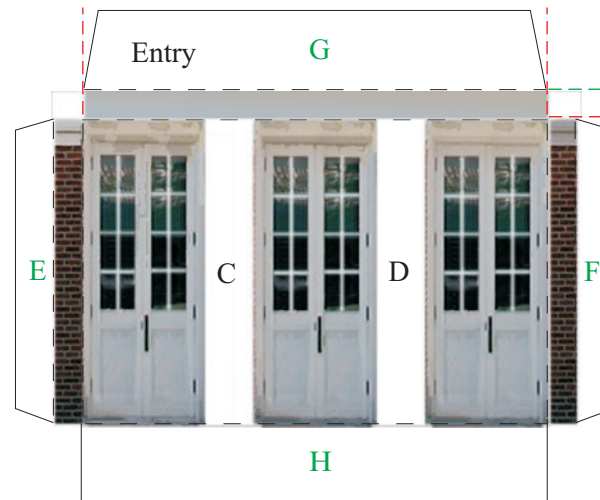
Basic Directions:

1. Be careful to cut around all tabs.
 2. Dotted lines are to be folded. Green dotted lines and green letters should be folded backward. Red dotted lines and red letters should be folded forward.
 3. Letters indicate how pieces should fit together.
- TIP: Lightly score dotted lines before cutting piece out to make folding easier.

To Make Recessed Entrance and Finish Front:

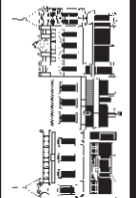
1. Cut out Front and Entry pieces.
2. Cut out 3 areas of Front marked with red "X".
3. Fold all dotted lines.
4. Glue tabs A and B to brick sides marked the same. This will create two square tubes.
5. Glue Entry to Front using tabs C through H.

View of complete model



BUILD YOUR OWN ILLINOIS MAIN STREET

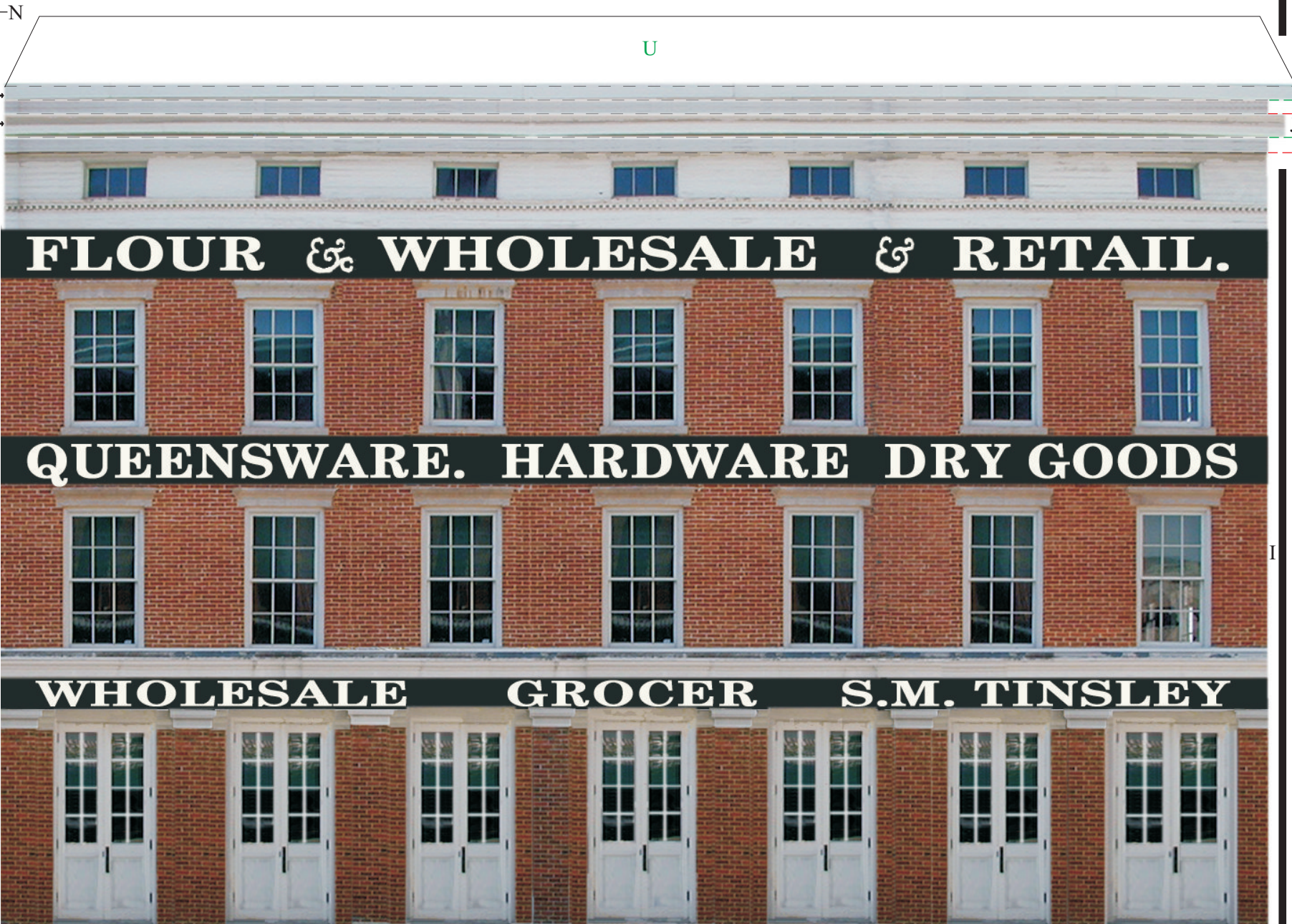
ILLINOIS MAIN STREET
ILLINOIS HISTORIC PRESERVATION AGENCY
1 Old State Capitol Plaza Springfield, IL 62701 217-782-4836
OFFICE OF LIEUTENANT GOVERNOR PAT QUINN
www.illinois-history.gov www.illinoismainstreet.org



TINSLEY BUILDING
6TH & ADAMS, SPRINGFIELD, IL
www.buildyourownmainstreet.com

Drawn By
Michael
Goebel-Bain
Date
5/07

PAGE
1 of 5



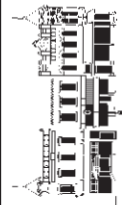
R

Left Side

P

www.buildyourownmainstreet.com www.illinois-history.gov www.illinoismainstreet.org

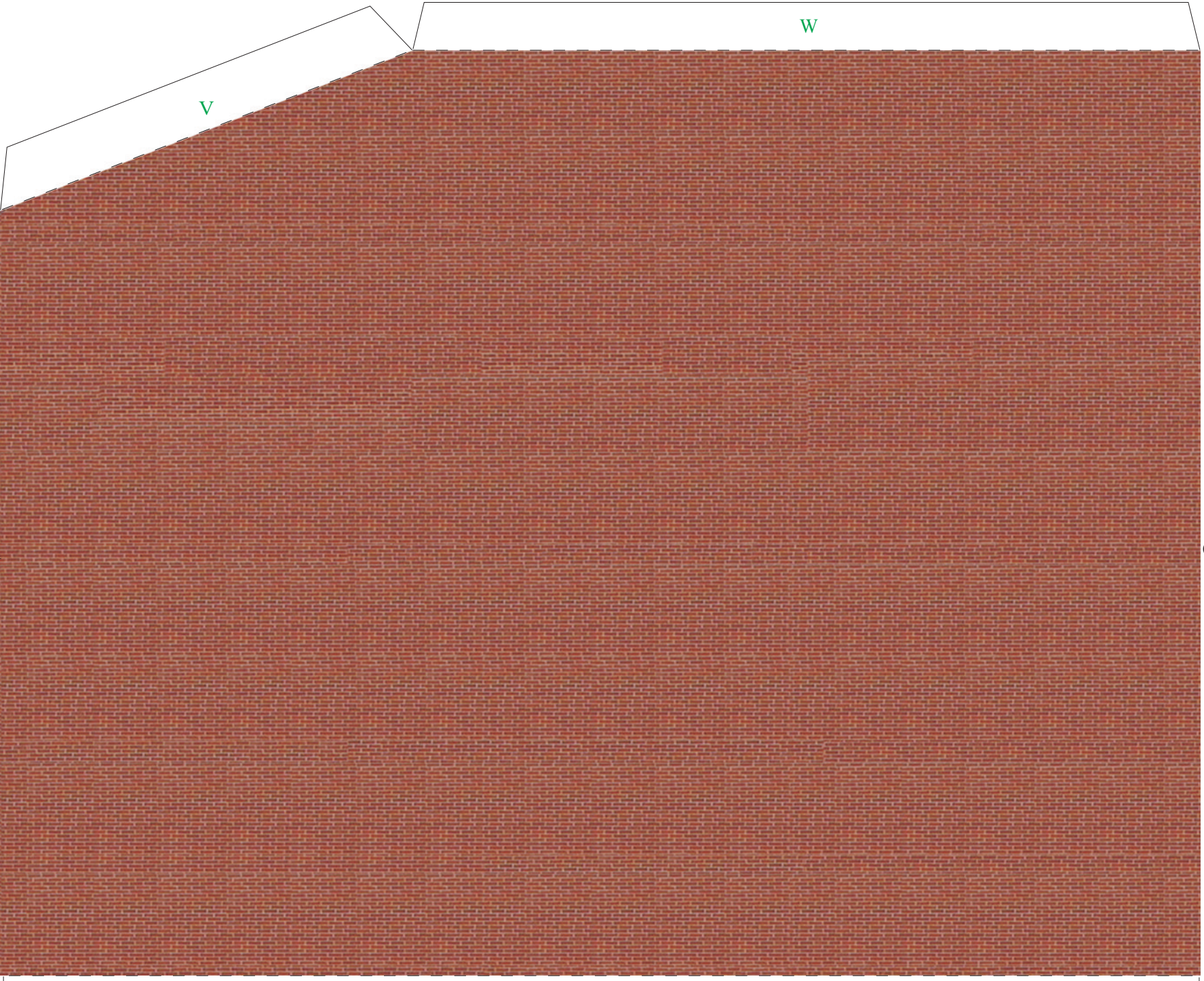
BUILD YOUR OWN ILLINOIS MAIN STREET



ILLINOIS MAIN STREET
ILLINOIS HISTORIC PRESERVATION AGENCY
1 Old State Capitol Plaza Springfield, IL 62701 217-782-4836
OFFICE OF LIEUTENANT GOVERNOR PAT QUINN
www.illinois-history.gov www.illinoismainstreet.org

TINSLEY BUILDING
6TH & ADAMS, SPRINGFIELD, IL
www.buildyourownmainstreet.com

Drawn By
Michael
Goebel-Bain
Date
5/07
PAGE
2 of 5



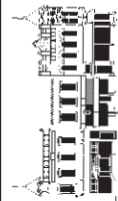
Q

© 2007 ILLINOIS HISTORIC PRESERVATION AGENCY

Right Side

S

BUILD YOUR OWN ILLINOIS MAIN STREET

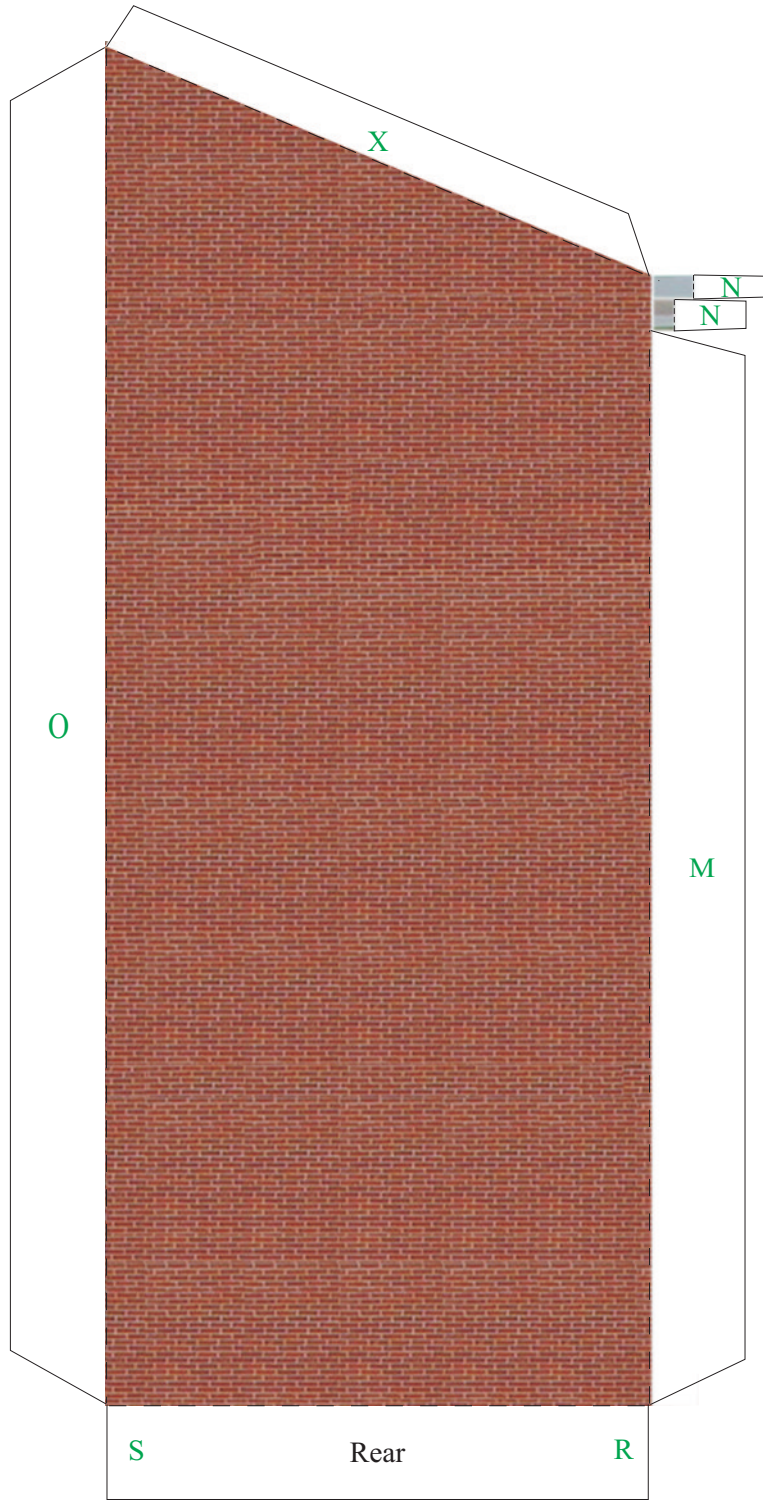


ILLINOIS MAIN STREET
ILLINOIS HISTORIC PRESERVATION AGENCY
1 Old State Capitol Plaza Springfield, IL 62701 217-782-4836
OFFICE OF LIEUTENANT GOVERNOR PAT QUINN
www.illinois-history.gov www.illinoismainstreet.org

TINSLEY BUILDING
6TH & ADAMS, SPRINGFIELD, IL
www.buildyourmainstreet.com

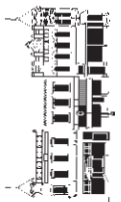
Drawn By
Michael
Goebel-Bain
Date
5/07

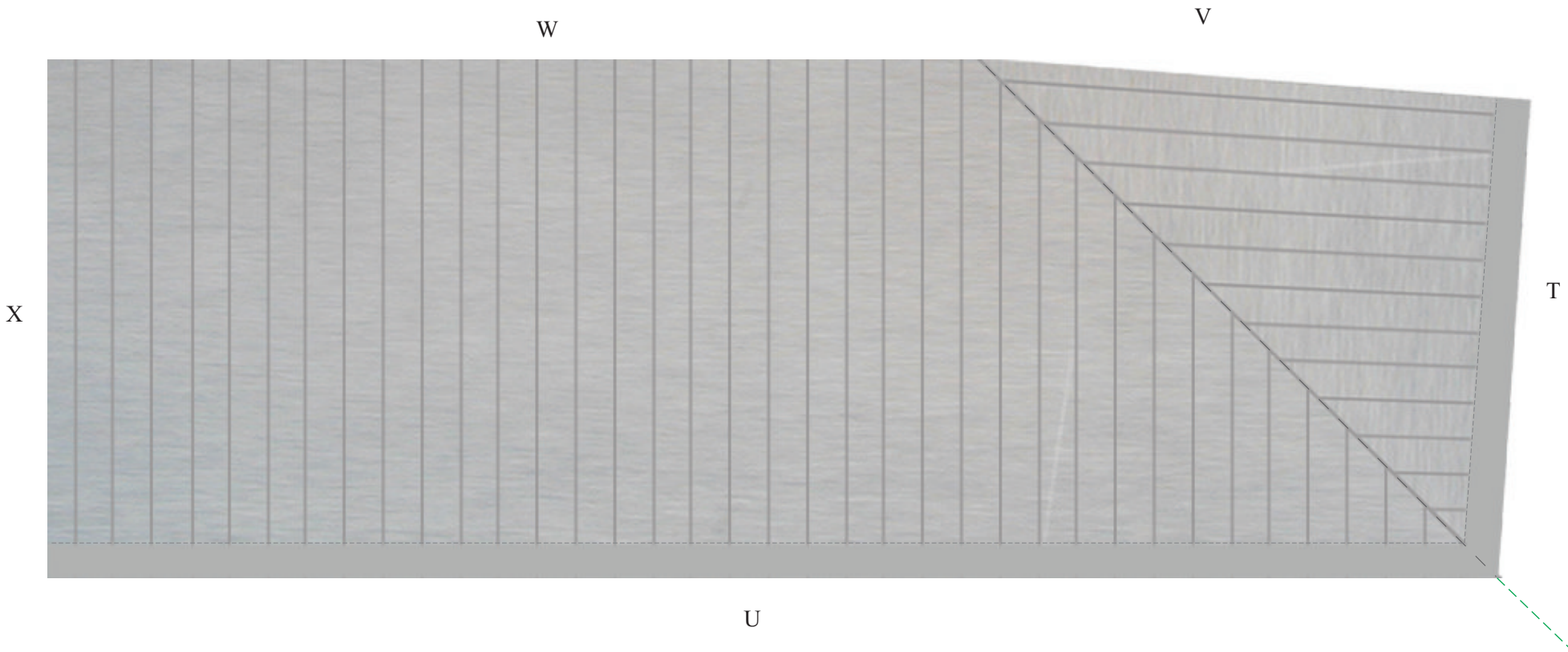
PAGE
3 of 5



To Add Sides and Back:

1. Cut out the Side and Back pieces. Fold all dotted lines.
2. Glue the Front onto the Left Side using tabs I and J.
3. Glue the Front onto the Right Side using tabs K and L.
4. Glue the Back onto the sides using tabs M, N, and O.
5. Glue the corners of all bottom tabs (P, Q, R, S) to create a base.





To Install the Roof:

1. Cut out Roof and Fold.
2. Roof will be moderately sloped to the front and left side.
3. Roof will have a narrow flat area, the gutter, at the front and left corners.
4. Glue tabs T, U, V, W, and X to the Roof's underside.

BUILD YOUR OWN ILLINOIS MAIN STREET



ILLINOIS MAIN STREET

ILLINOIS HISTORIC PRESERVATION AGENCY
 One Old State Capitol Plaza Springfield, Illinois 62701 217.782.4836
 OFFICE OF LIEUTENANT GOVERNOR PAT QUINN
www.illinois-history.gov www.illinoismainstreet.org

TINSLEY BUILDING
 6TH & ADAMS, SPRINGFIELD, IL
www.buildyourownmainstreet.com

Drawn By
 Michael
 Goebel-Bain

Date
 5/07

PAGE
 5 of 5